

Appendix G – Catchment areas for consideration

To access the maps online: [GeoDiscoverer - Powys County Council](#)

Contents

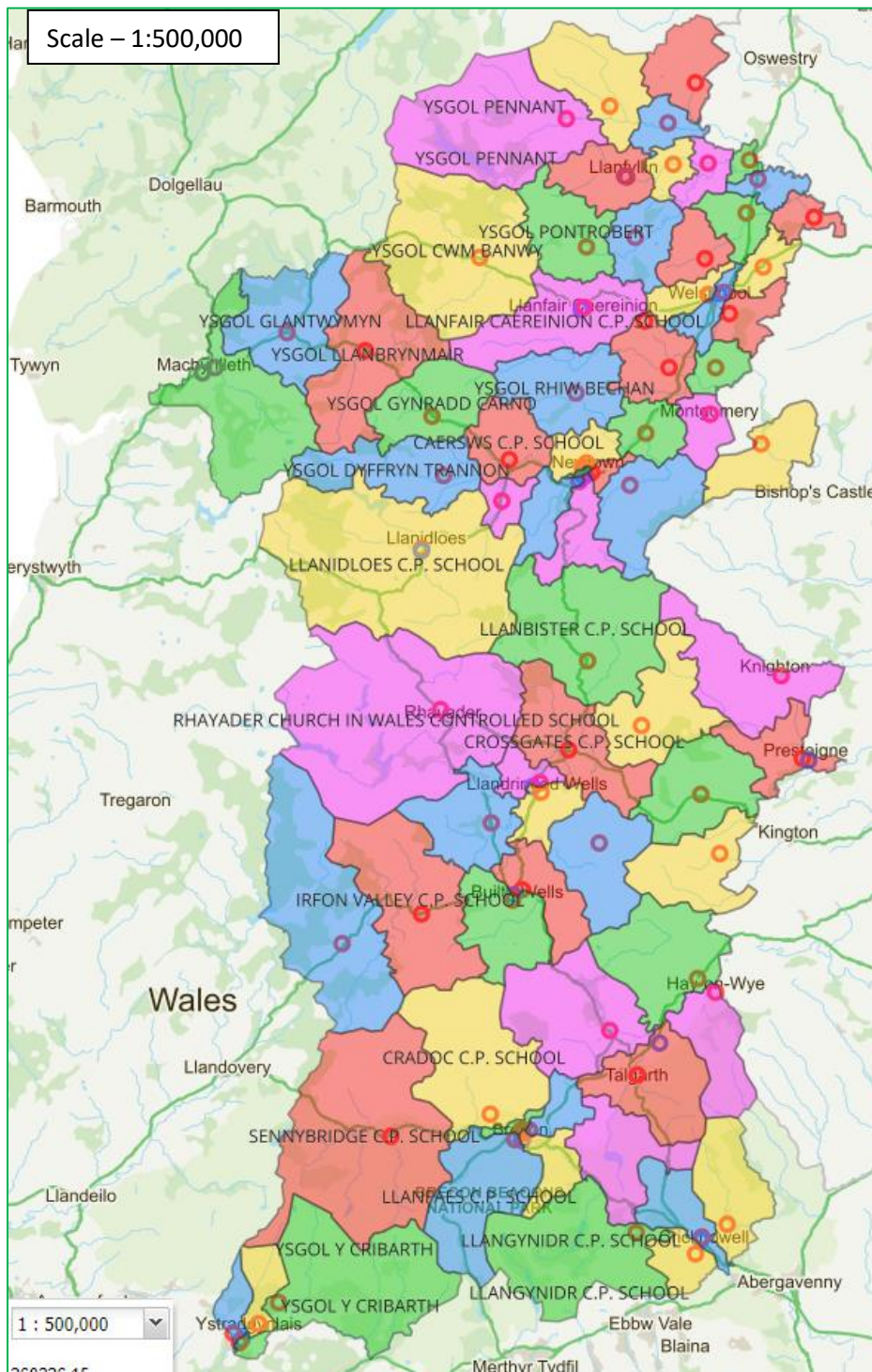
Overview of Powys catchment areas:	2
Brecon cluster	6
Ysgol Bro Caereinion cluster	11
Ysgol Bro Hyddgen cluster	20
Crickhowell High School cluster	23
Gwernyfed High School cluster	27
Llanidloes High School cluster	34
Ysgol Maesydderwen cluster:	41
Newtown High School – Newtown Campus cluster:	42
Newtown High School – John Beddoes cluster:	43
Ysgol Calon Cymru – Builth campus cluster:	45
.....	45
Ysgol Calon Cymru – Llandrindod campus cluster:	46
Ysgol Llanfyllin cluster:	47

Overview of Powys catchment areas:

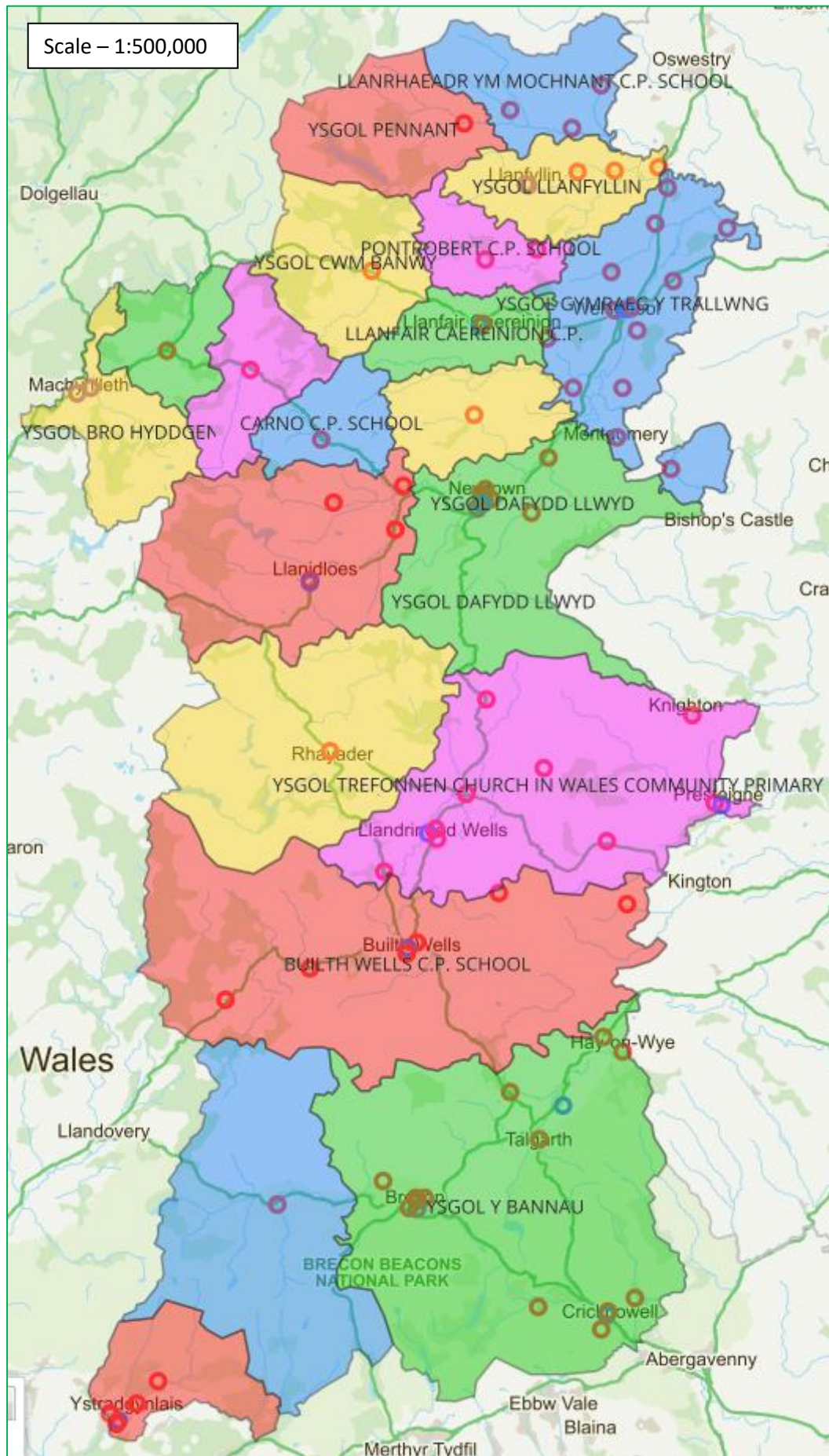
All primary catchment maps have been developed based on the following principles:

- i. nearest school
with minor adjustments to reflect:
- ii. natural transport routes and links
- iii. local geography and topography.

Overview of Powys English medium primary catchment areas:

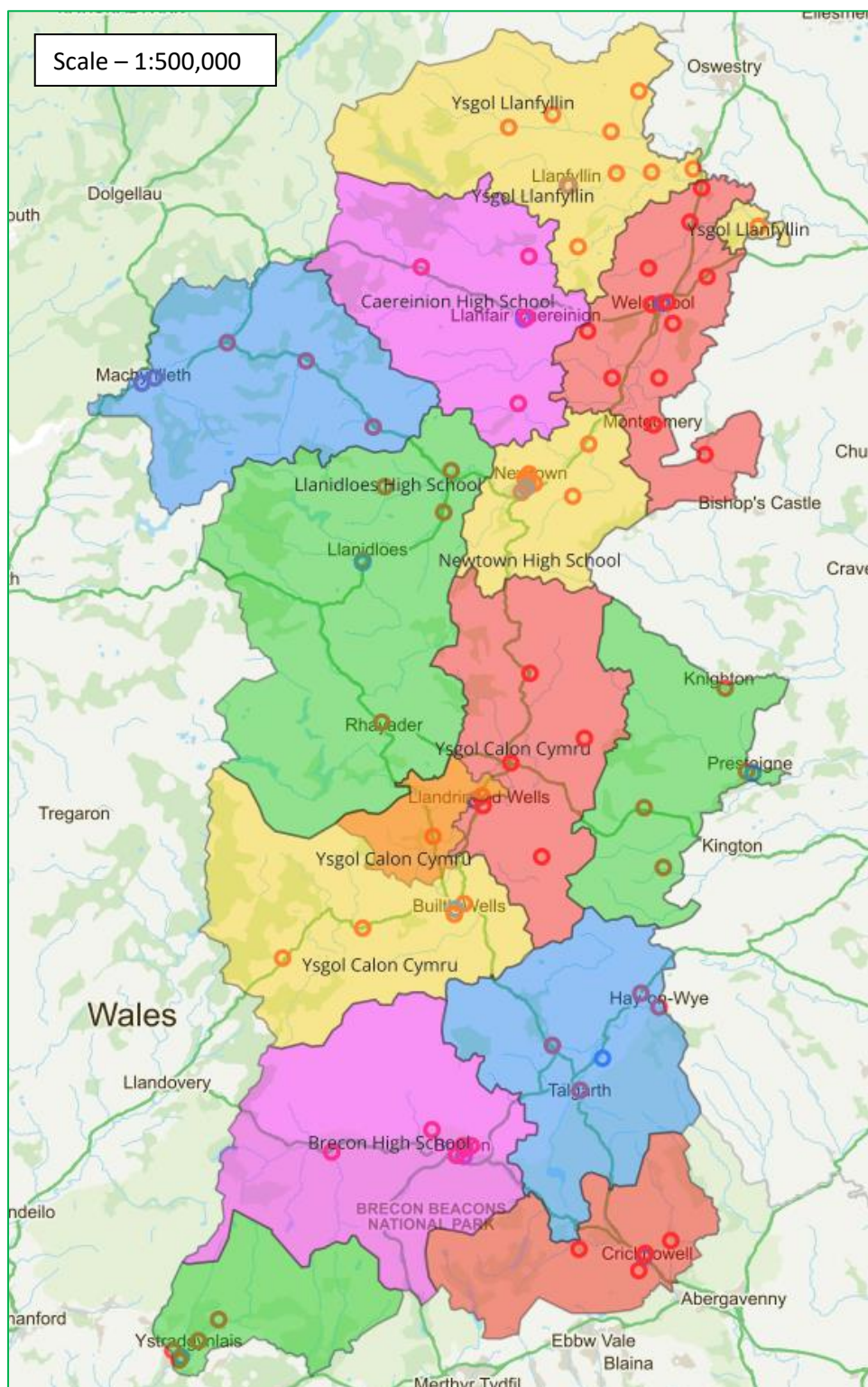


Overview of Powys Welsh medium primary catchment areas:

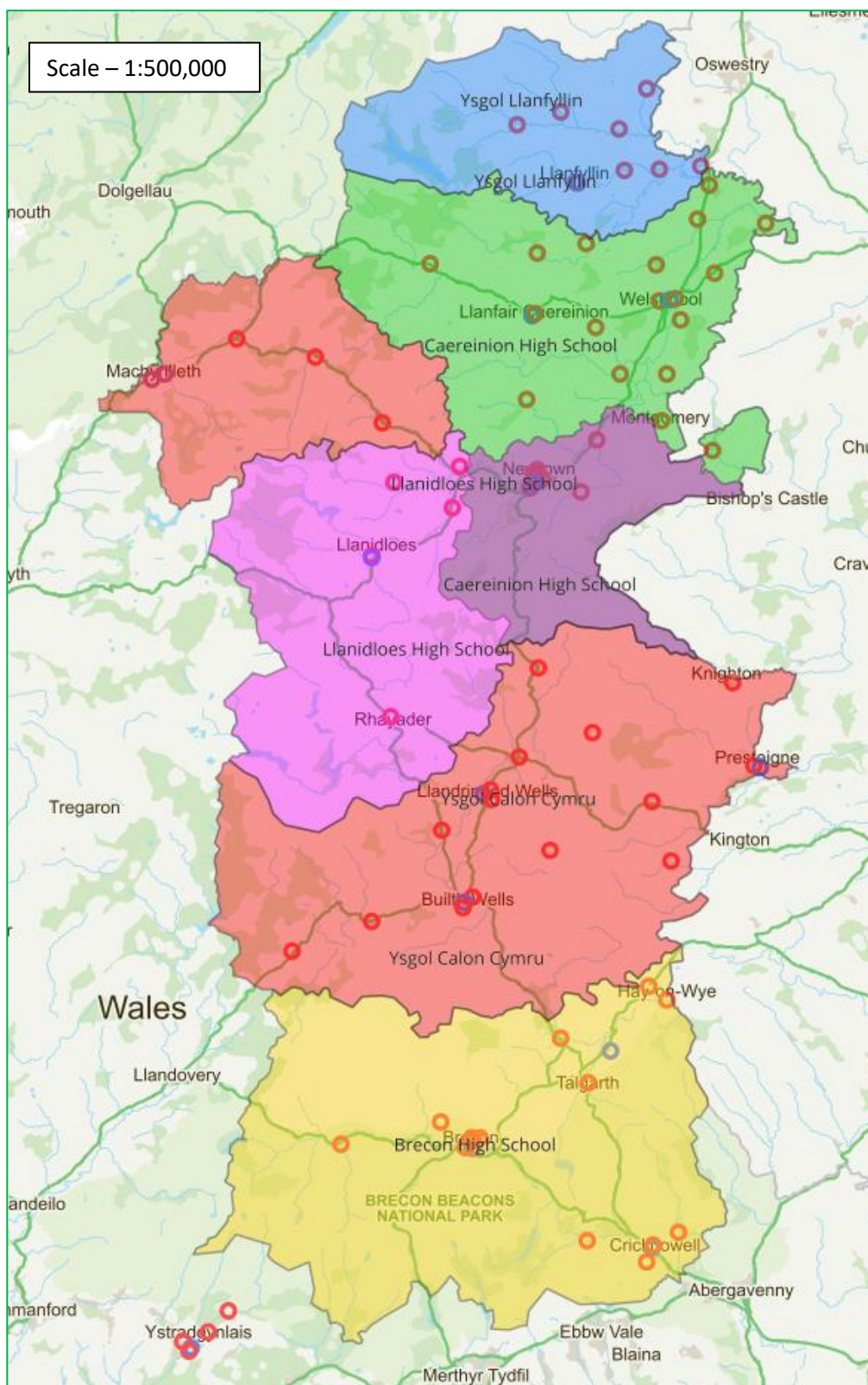


Overview of Powys English medium secondary catchment areas:

To support and improve the transition from primary to secondary school, each secondary catchment map has been formed from the amalgamation of each of the secondary cluster feeder primary schools (See Appendix B - Admissions Information and Arrangements document).




Overview of Powys Welsh medium secondary catchment areas:

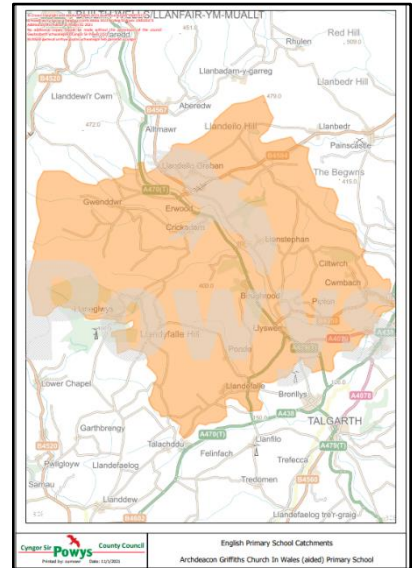


NB: Learners from Ysgol Gymraeg Dyffryn y Glowyr transition to Ysgol Gymraeg Ystalyfera Bro Dur in the neighbouring county of Castell-nedd Port Talbot.

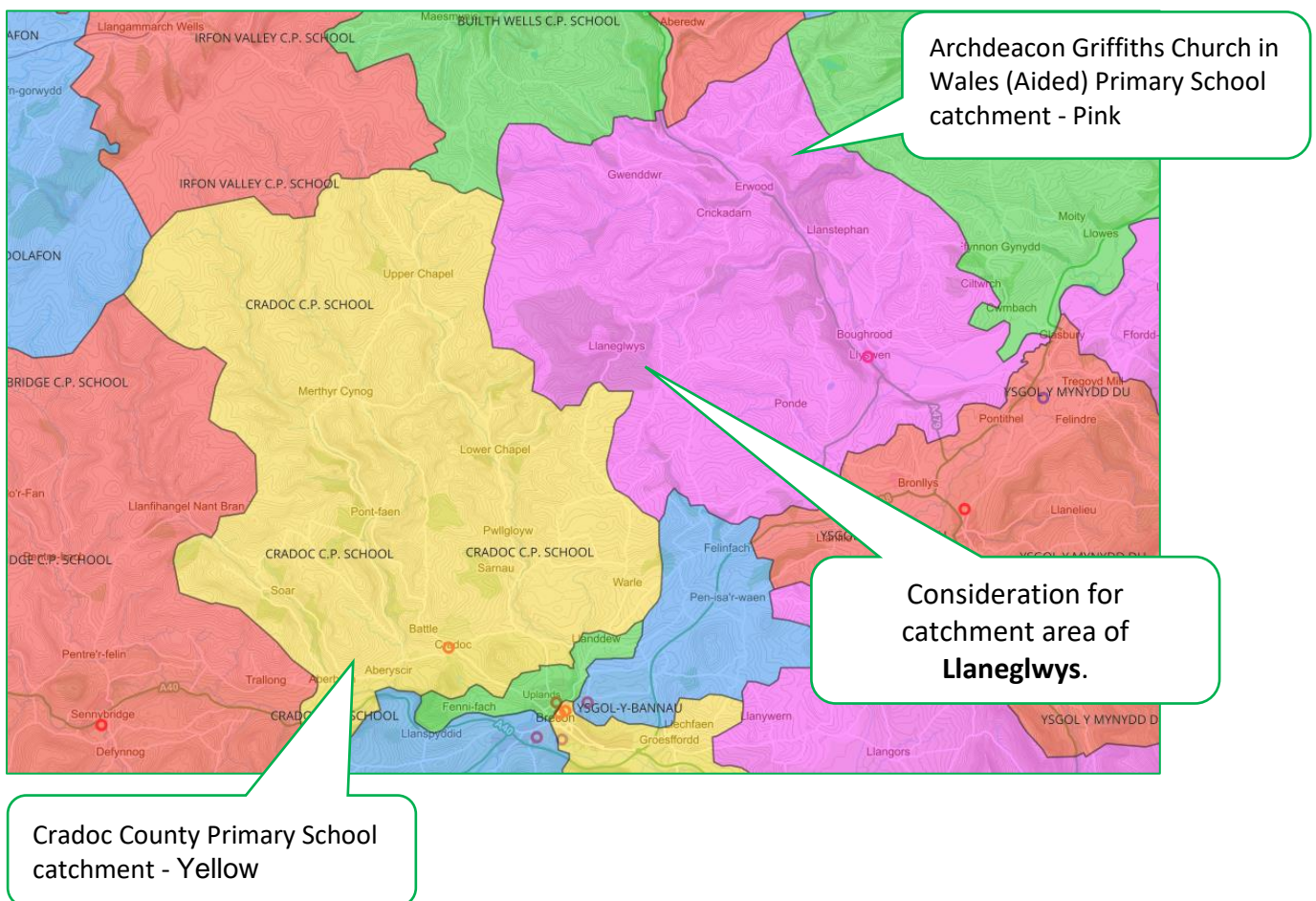
Brecon cluster:

- To **not proceed** with the minor amendments to the catchment boundaries for the primary catchment area of Llaneglwys. Llaneglwys to **remain** in the catchment area of Archdeacon Griffiths Church in Wales school. Depending on route taken, distance is either 7.9 miles or 8.4 miles to both Llyswen (Archdeacon Griffiths) and Cradoc (AA Route Planner).

Original catchment map of Archdeacon Griffiths Church in Wales based on nearest school alone: 

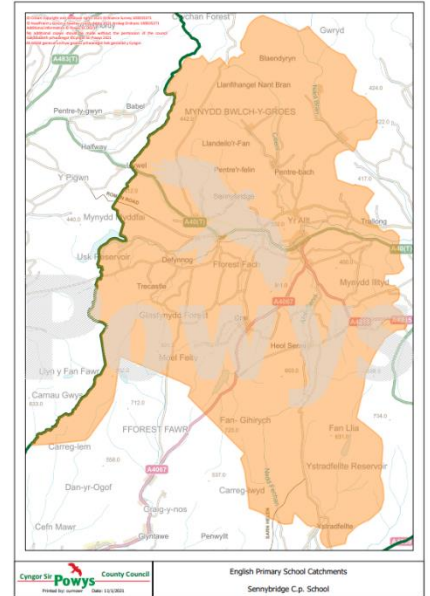


Consulted and proposed **final** catchment map: 

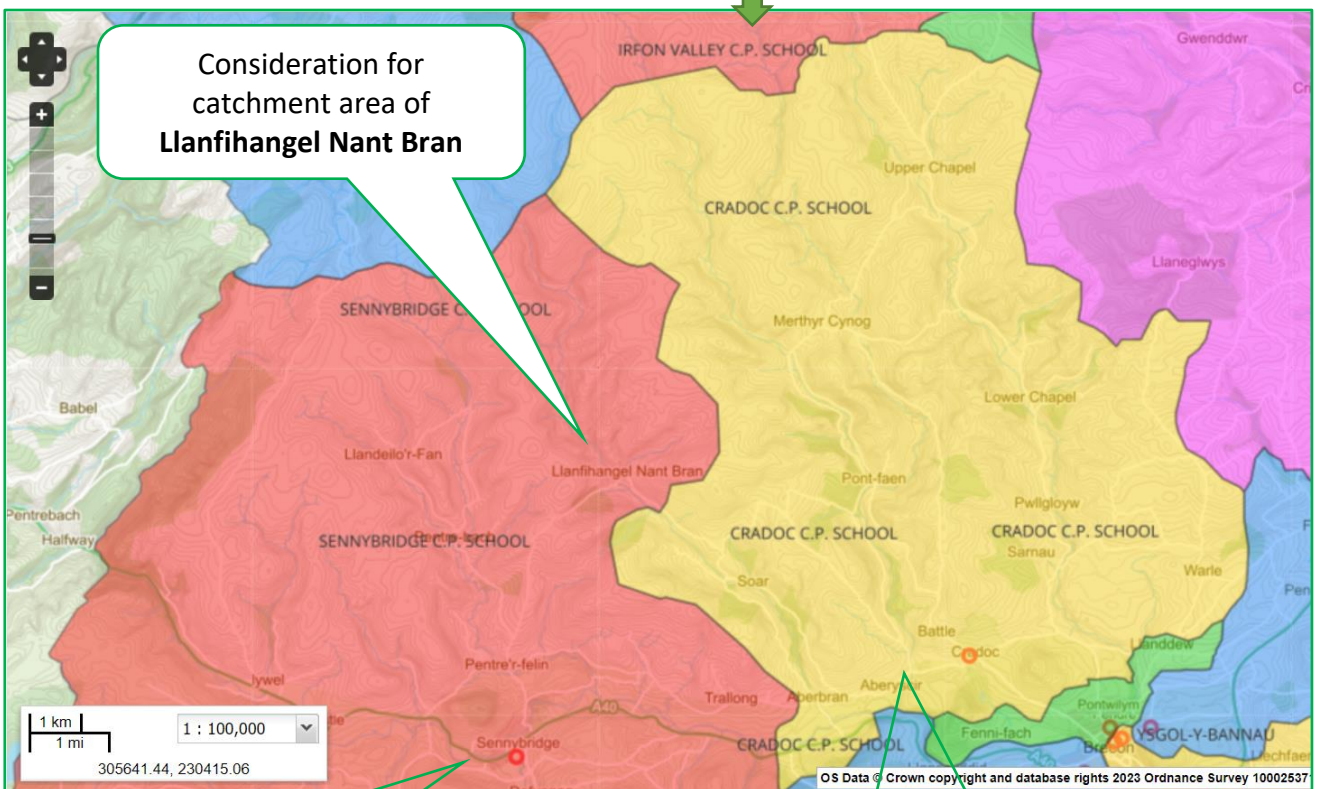


- To **not proceed** with the minor amendments to the catchment boundaries for the primary catchment areas of Llanfihangel Nant Bran. Llanfihangel Nant Bran to **remain** in the catchment area of Sennybridge CP school. Distance from Llanfihangel Nant Bran to Cradoc CP school is 6.4 miles and Sennybridge CP School is 4.6 miles.

Original catchment map of Sennybridge CP School based on nearest school alone: ➡




Consulted and proposed **final** catchment map:

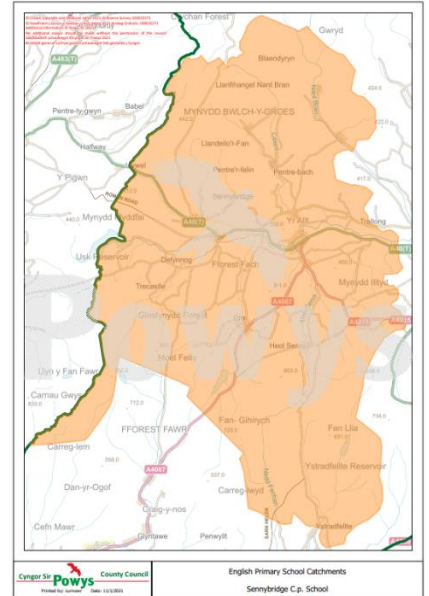


Sennybridge County Primary School catchment - Salmon

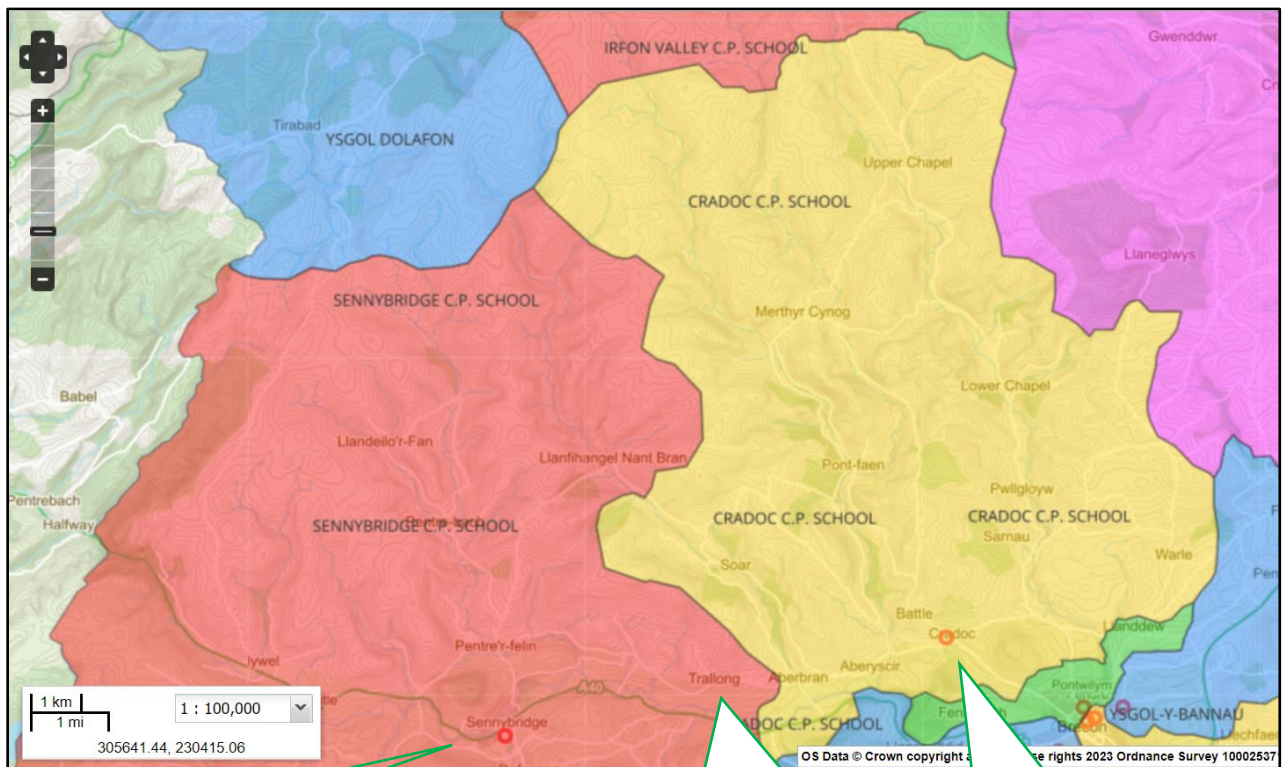
Cradoc County Primary School catchment - Yellow

- To **not proceed** with the minor amendments to the catchment boundaries for the primary catchment areas of Penpont. Penpont to **remain** in the catchment area of Sennybridge CP school. Distance from Penpont to Cradoc CP school is 4.2 miles and Sennybridge CP School is 3.3 miles along the A40.

Original catchment map of Sennybridge CP School based on nearest school alone: 



Consulted and proposed **final** catchment map: 



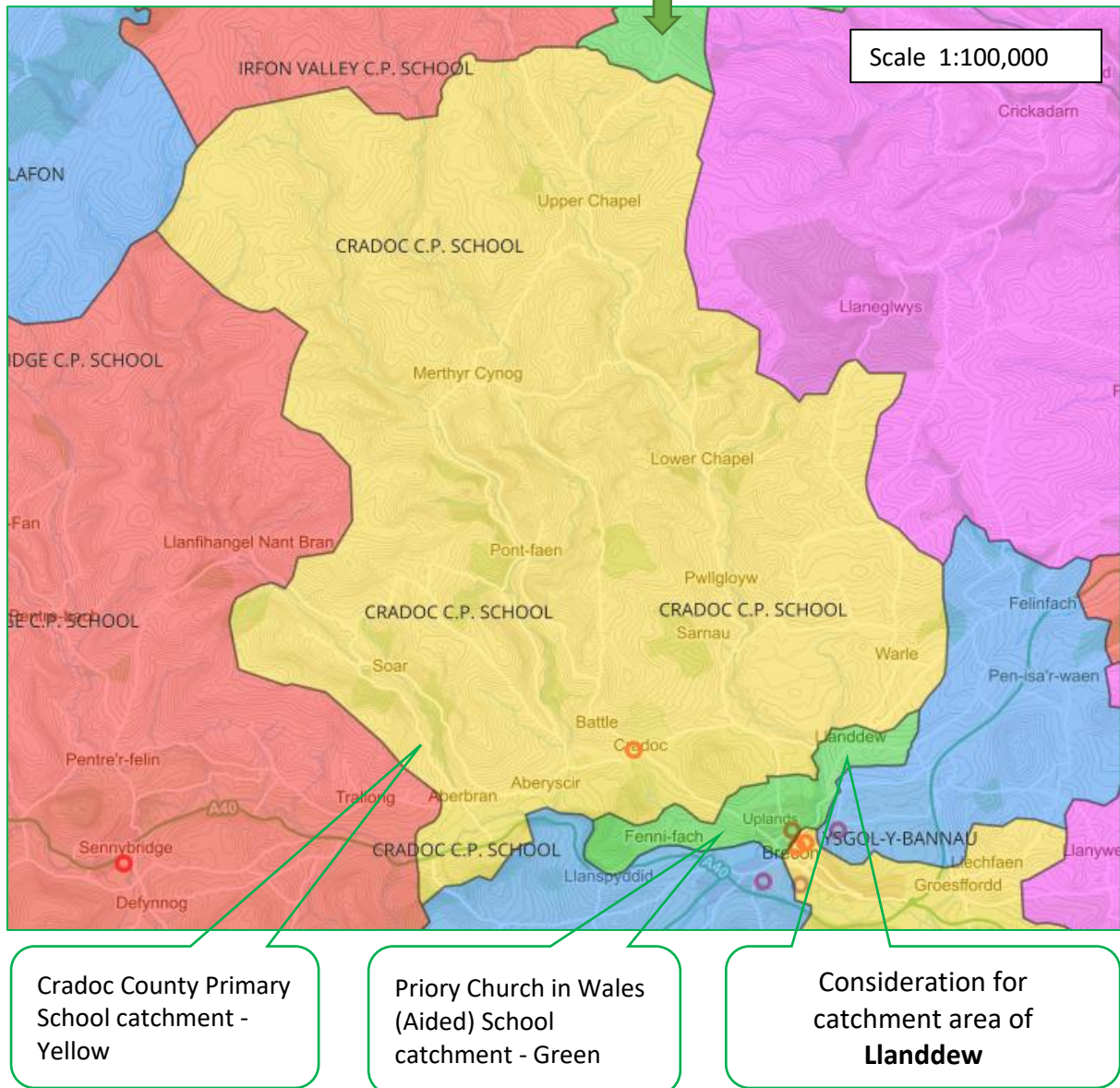
Sennybridge County Primary School catchment - Salmon

Consideration for catchment area of **Penpont**


Cradoc County Primary School catchment - Yellow


- To **not proceed** with the minor amendments to the catchment boundaries for the primary catchment areas of Llanddew. Llanddew to **remain** in the catchment area of Priory Church in Wales school. Distance from Llanddew to Cradoc CP school is 2.7 miles and Priory School is 1.5 miles and below the two mile threshold to be eligible for free home to school transport.

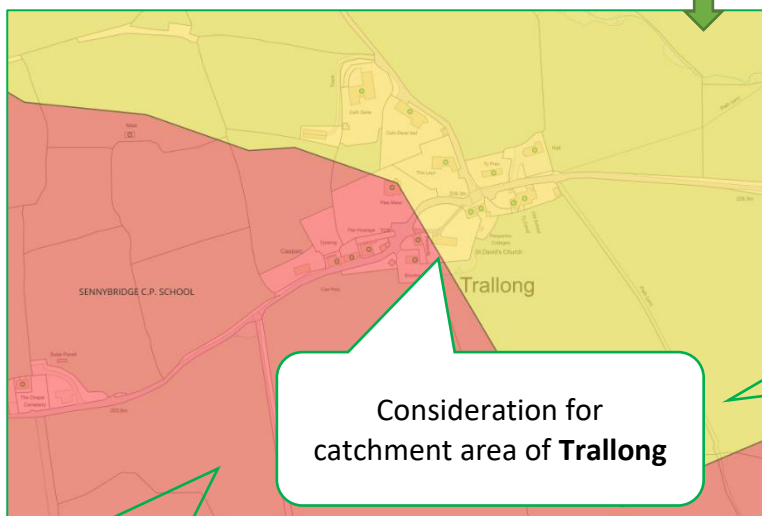
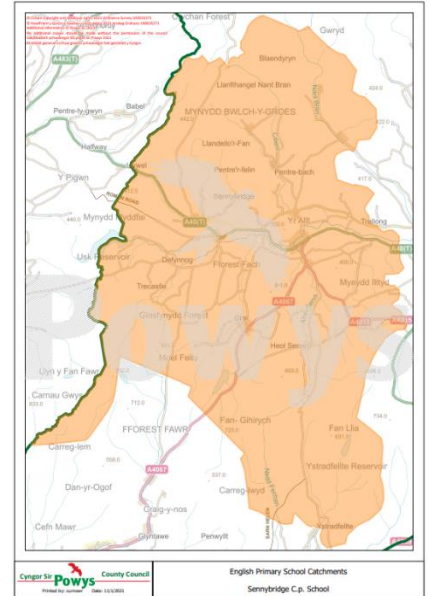
Consulted and proposed **final** catchment map:



- To **proceed** with the minor amendment to the catchment boundary for the primary catchment area of Trallong – amend so that Trallong hamlet is no longer split in half and falls completely within catchment area of Sennybridge CP School. Distance from Trallong to Cradoc CP school is 3.5 miles and Sennybridge CP School is 3.3 miles (mainly along the A40).

Original catchment map of Sennybridge CP School based on nearest school alone: 

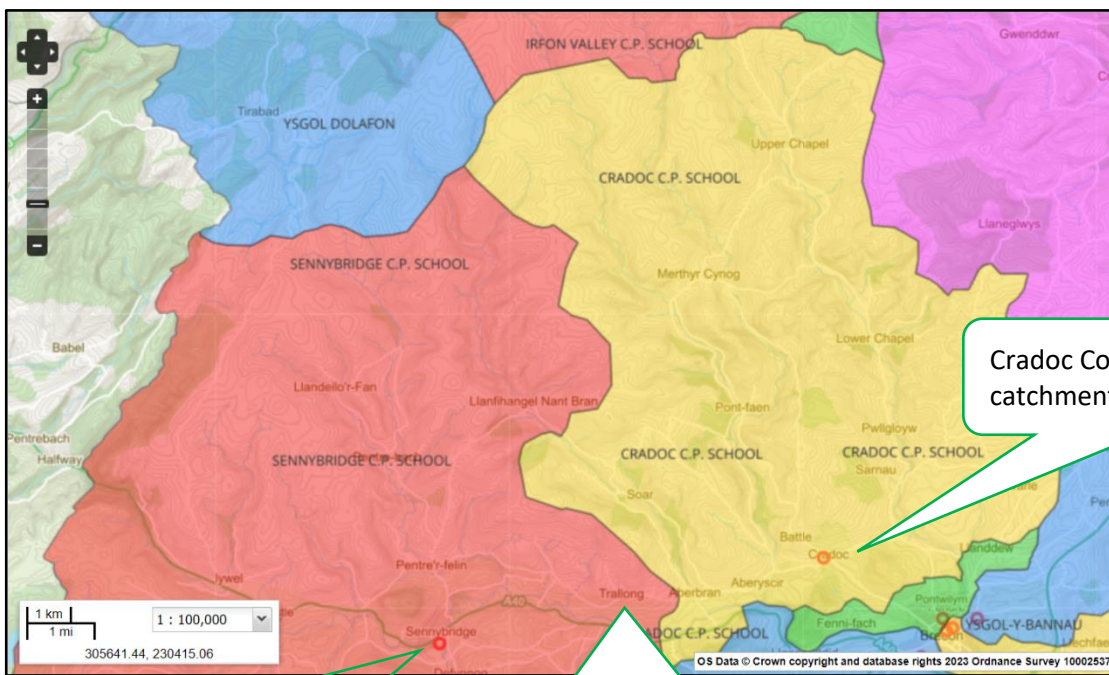
Consulted catchment map cutting the hamlet in half: 



Sennybridge County Primary School catchment - Salmon

Cradoc County Primary School catchment - Yellow

Proposed new catchment map as a result of consultation responses:



Sennybridge County Primary School catchment - Salmon

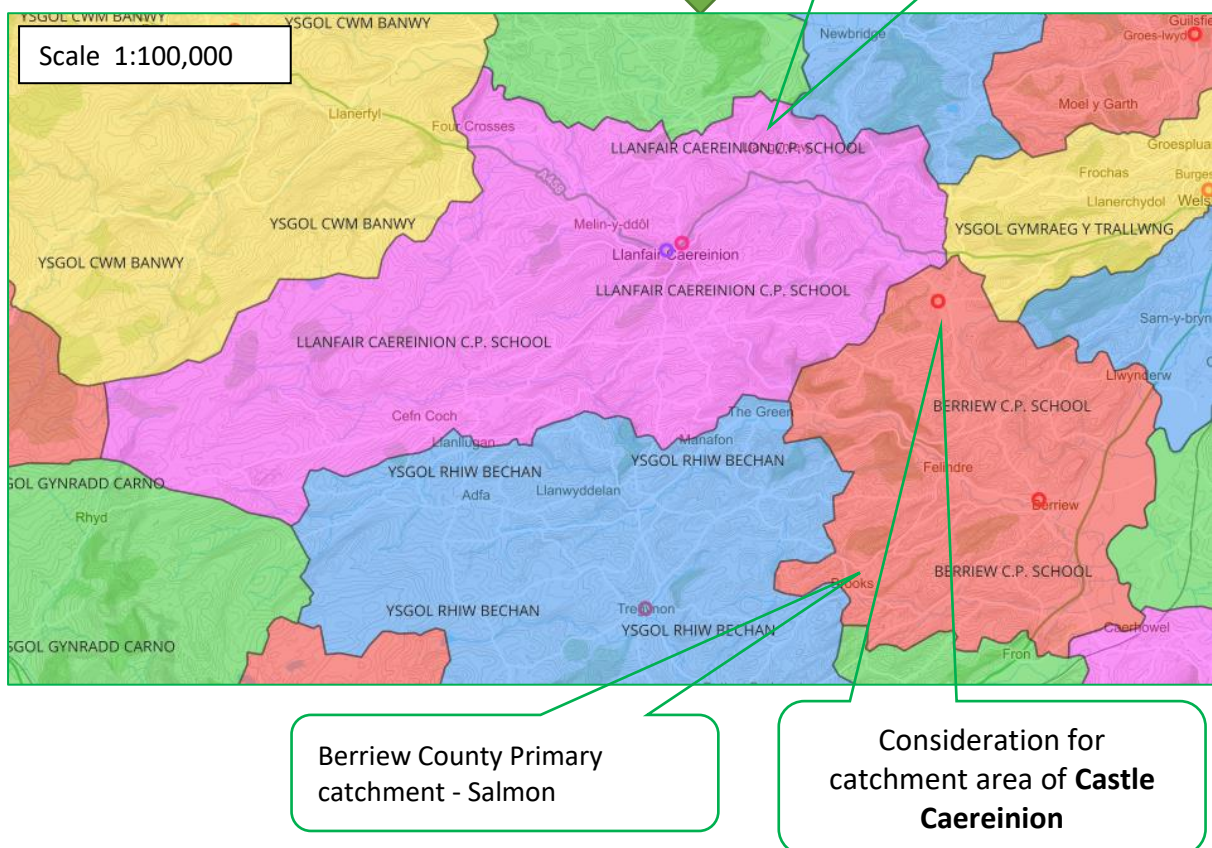
Consideration for catchment area of Trallong

Cradoc County Primary School catchment - Yellow

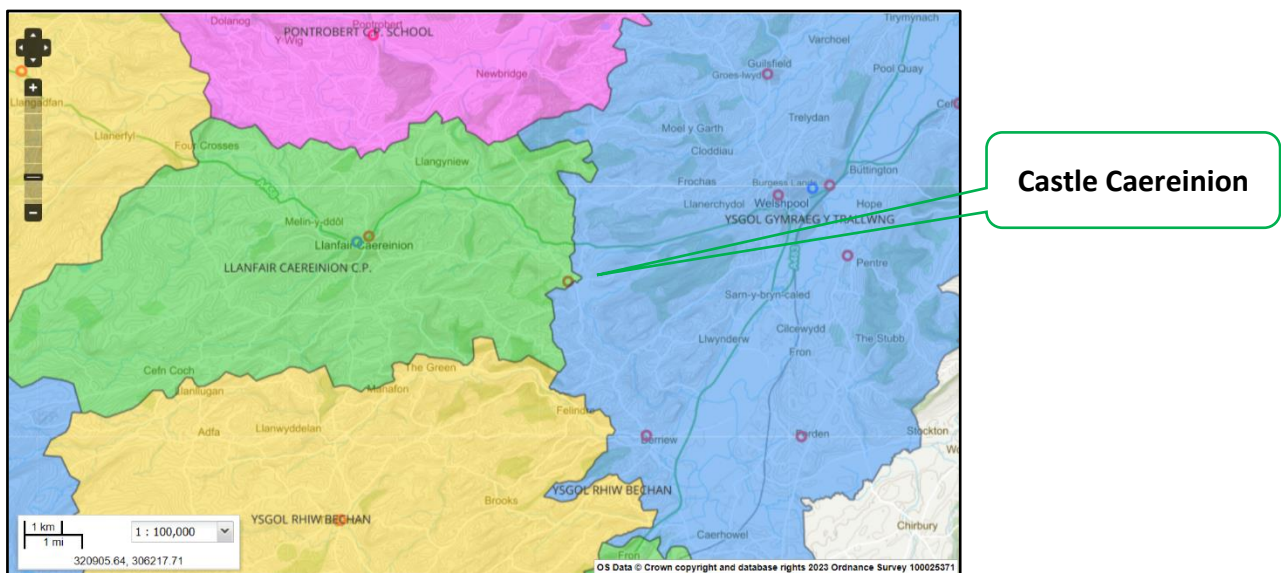
Ysgol Bro Caereinion cluster:

- To **not proceed** with the minor amendments to the catchment boundaries for the primary catchment areas of Castle Caereinion. Castle Caereinion to **remain** in the English medium catchment area of **Berriew CP school**. Distance from the village of Castle Caereinion to Berriew CP school is 3.7 miles and Ysgol Bro Caereinion is 4.8 miles along the narrow B4385 or 5.5 miles along the A458.

Consulted and proposed **final** catchment map:




NB: Learners from Castle Caereinion opting for Welsh medium education would be eligible for free home to school transport (depending on exact home location) to either Ysgol Bro Caereinion or Ysgol Gymraeg y Trallwng.



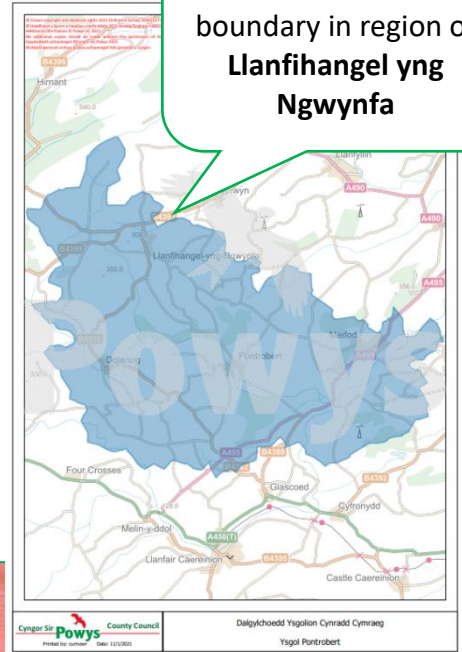
- To **not proceed** with the minor amendments to the catchment boundary for the primary catchment area of Llanfihangel yng Ngwynfa. Llanfihangel yng Ngwynfa to **remain** in the catchment area of **Ysgol Pontrobert**.

Distance from the hamlet of Llanfihangel yng Ngwynfa to Ysgol Pennant is 10.3 miles along the B4393 and B4391, Ysgol Cwm Banwy is 8.1 miles along the B4395 and Ysgol Pontrobert is **4.3 miles** along the B4382.

Original catchment map of Ysgol Pontrobert

based on nearest school alone: 

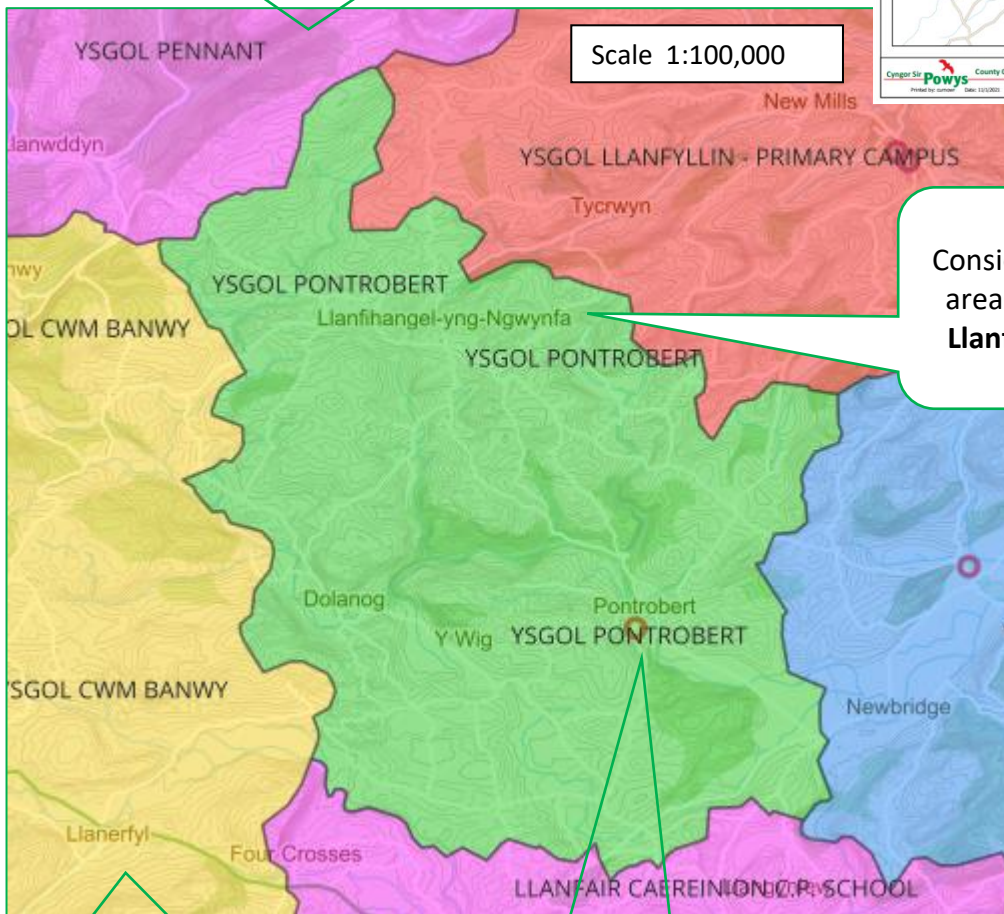
Consideration for catchment area boundary in region of **Llanfihangel yng Ngwynfa**



Consulted and proposed **final** catchment map:



Ysgol Pennant catchment - Pink



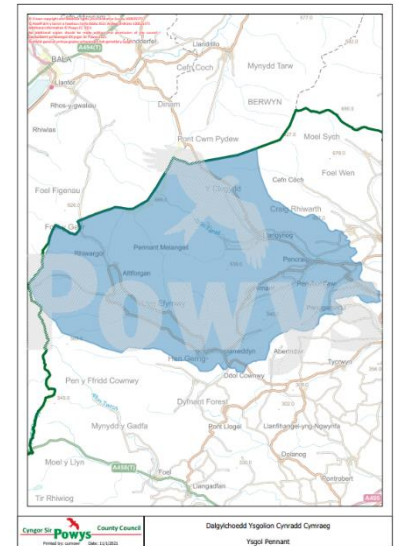
Consideration for catchment area boundary in region of **Llanfihangel yng Ngwynfa**

Ysgol Cwm Banwy catchment - Yellow

Ysgol Pontrobert catchment - Green

- To **proceed** with the minor amendments to the catchment boundary for the primary catchment area of Llanwddyn. Llanwddyn to **remain** in the catchment area of **Ysgol Pennant**. Distance from the village of Llanwddyn to Ysgol Pennant is 7.1 miles along the B4396, Ysgol Llanfyllin is 9.7 miles along the B4393, Ysgol Pontrobert is 9.6 miles along the B4393 and Ysgol Cwm Banwy is 8.6 miles along the B4395.

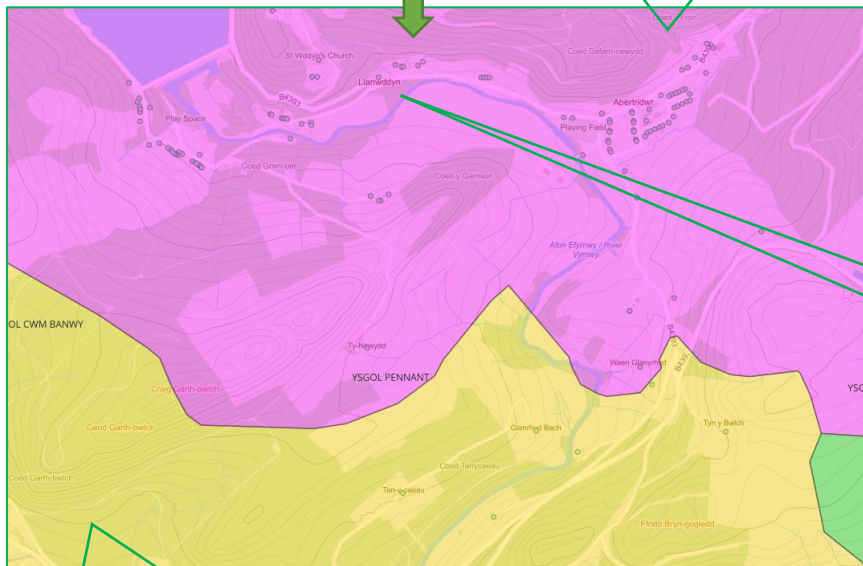
Original catchment map of Ysgol Pennant based on nearest school alone:



Consulted catchment map:



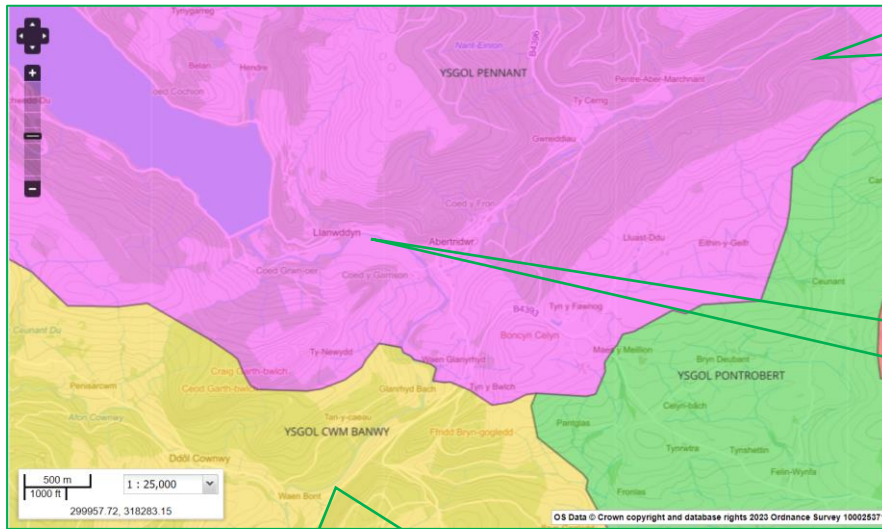
Ysgol Pennant catchment - Pink



Consideration for catchment area boundary in region of **Llanwddyn**

Ysgol Cwm Banwy catchment - Yellow

Proposed new and final catchment boundary following consultation:

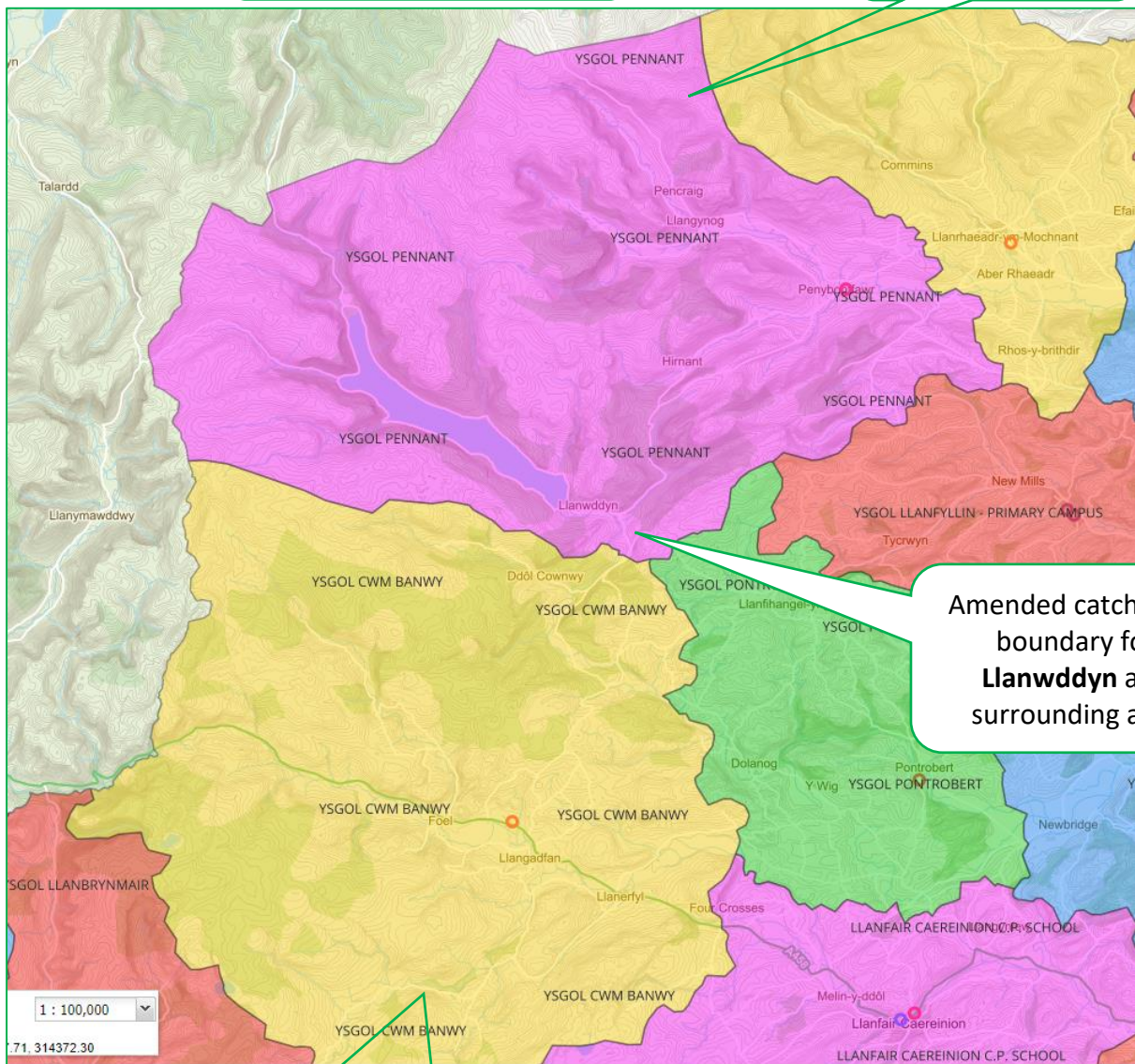


Ysgol Pennant catchment - Pink

Amended catchment boundary for Llanwddyn and surrounding area

Ysgol Cwm Banwy catchment - Yellow

Ysgol Pennant catchment - Pink



Amended catchment boundary for Llanwddyn and surrounding area

Ysgol Cwm Banwy catchment - Yellow

- To **remove** Meifod County Primary school as a feeder school for Ysgol Bro Caereinion following request by Meifod governing body in October 2022 to change clusters from Bro Caereinion to Ysgol Llanfyllin.

As a result, learners from Meifod CP School will transition to Ysgol Llanfyllin.

This will impact on pupil numbers for Ysgol Bro Caereinion and Ysgol Llanfyllin. However, as the numbers below reflect, at least half of the learners and their families have chosen in recent years to transition to Ysgol Llanfyllin rather than Ysgol Bro Caereinion.

	No of pupils at Meifod CP School	Destination Secondary School		
		Caereinion / Bro Caereinion	Ysgol Llanfyllin	Other schools (outside of Powys)
Sept 2022	10	3 (30%)	5 (50%)	2 (20%)
Sept 2021	14	5 (35.7%)	8 (57.1%)	1 (7.1%)
Sept 2020	4	1 (25%)	3 (75%)	0 (0%)
	3 year average	32.1%	57.1%	10.7%

Future pupil numbers based on pupil numbers at Meifod CP School (figures as of 05.01.2023 on Teacher Centre):

Year 6: 7
Year 5: 8
Year 4: 14
Year 3: 10
Year 2: 9
Year 1: 8
Reception: 8

Total: 64 (as of 05.01.2023)

Potential financial impact on Ysgol Bro Caereinion and Ysgol Llanfyllin under the new secondary formula agreed in cabinet on 31.01.2023:

Component 1 – Per pupil Sum of new the secondary formula (indicative 23/24 figures):

- £4,129 / learner in Key Stage 3
- £4,414 / learner in Key Stage 4

Component 3 – Unique Factors of the new secondary funding formula (indicative 23/24 figures):

- Teaching and Learning top up (if school has less than 600 pupils or 120 in a year group).
- Small School Management and Administration top up (for secondary schools with fewer than 592 pupils).

- Further review to consider if **Ysgol Dafydd Llwyd** should remain as a feeder school for Ysgol Bro Caereinion and / or Llanidloes High School. In doing so, careful consideration should be given to:
 - Impact of strength of transition to only one cluster school, rather than dilution to two secondary schools
 - Impact on continuity of language provision and the breadth and quality of the Welsh language offer
 - Impact on capacity number of both schools and impact on neighbouring schools as per the guidance outlined below.

The “Measuring the capacity of schools in Wales” guidance states:

1.12 The admission number is the number of pupils who should be admitted to a relevant age group if sufficient applications for places are received. Pupils may not be refused a place until the admission number is reached. The number is calculated by dividing the capacity by the number of year groups to be accommodated at the school. As the admission number reflects the school’s ability to accommodate pupils it should only be exceeded in exceptional circumstances. Once an admission number has been set by the admission authority, an admission authority should not admit children above the published number unless the school governing body and the local authority agree that admitting above that number will not adversely affect the school in the longer term and will not have a detrimental effect on neighbouring schools. If it is necessary to breach the admission number for more than two years the local authority, in consultation with the Diocesan Authority where appropriate, should review the provision of school places in that area.

1.13 Governing body admission authorities should be particularly mindful that admitting more pupils than the school has capacity for, could prejudice the efficiency of education for pupils and could have the effect of drawing pupils from other schools that may then find it more challenging to retain sufficient teachers to facilitate the delivery of a broad and balanced curriculum.

The School Admissions Code states:

3.5 The admission number reflects the school's ability to accommodate pupils and it should not be exceeded. However, it may be reasonable for the admission authority to consider exercising discretion, in exceptional circumstances, to admit more pupils than the admission number indicates. Such instances might include:

- Where there are a significant number of surplus places across the year groups in the school, so that the pupil can be accommodated without prejudicing future intakes if the increased uptake of places continues.
- If there is a temporary shortage of a particular type of provision in an area, for example Welsh medium education, while additional provision is being established.

It would not be appropriate to exceed the admission number of a school as described above where there are places available at a suitable alternative school which is within a reasonable travelling distance.

The following table outlines the secondary school destination of Ysgol Dafydd Llwyd learners in the last three years. Due to the significant impact on both Ysgol Bro Caereinion and Llanidloes High School the case for a formal review is strong.

	No of pupils at Ysgol Dafydd Llwyd (PLASC figures)	Destination Secondary School				
		Caereinion / Bro Caereinion	Llanidloes High School	Welshpool High School	Newtown High School	Other schools (outside of Powys)
Sept 2022	17	7 (41.2%)	5 (29.4%)	1 (5.9%)	1 (5.9%)	3 (17.6%)
Sept 2021	17	5 (29.4%)	9 (52.9%)	0 (0%)	2 (11.8%)	1 (5.9%)
Sept 2020	23	9 (39.1%)	11 (47.8%)	1 (4.3%)	1 (4.3%)	1 (4.3%)
	3 year average	36.84%	43.9%	3.51%	7.0%	8.8%

Impact: Future pupil numbers based on pupil numbers at Ysgol Dafydd Llwyd (figures as of 31.01.2023 on Teacher Centre) indicates an increasing role at Ysgol Dafydd Llwyd and therefore significant impact for Ysgol Bro Caereinion and / or Llanidloes High School.

Year 6: 17

Year 5: 16

Year 4: 25

Year 3: 24

Year 2: 38

Year 1: 31

Reception: 32

Total: 183 (as of 31.01.2023)

Potential financial impact on Ysgol Bro Caereinion and Llanidloes High School under the new secondary formula agreed in cabinet on 31.01.2023:

Component 1 – Per pupil Sum of new the secondary formula (indicative 23/24 figures):

- £4,129 / learner in Key Stage 3

- £4,414 / learner in Key Stage 4

Component 3 – Unique Factors of the new secondary funding formula (indicative 23/24 figures):

- Teaching and Learning top up (if school has less than 600 pupils or 120 in a year group).
- Small School Management and Administration top up (for secondary schools with fewer than 592 pupils).

Ysgol Bro Hyddgen cluster:

- **Maintain Ysgol Gynradd Carno** solely within the catchment area of Ysgol Bro Hyddgen for Secondary provision. This decision is based on Ysgol Gynradd Carno being a Welsh medium primary school as part of the Federation of schools with Ysgol Glantwymyn and Ysgol Llanbrynmair and strong transition and cluster links with Ysgol Bro Hyddgen.

However, the distance of Carno village from Llanidloes High School (via Caersws) is 14.8 miles compared to Bro Hyddgen at a distance of 17.2 miles.

Of the small number of pupils attending Ysgol Gynradd Carno, strengthening transition to Ysgol Bro Hyddgen will impact positively on pupil numbers, however the impact on Llanidloes High School will be negative and will not reflect the strength of feeling within the local community and past trends.

	No of pupils at Ysgol Gynradd Carno (PLASC figures)	Destination Secondary School		
		Ysgol Bro Hyddgen	Llanidloes High School	Other schools (outside of Powys)
Sept 2022	8	2 (25%)	5 (62.5%)	1 (20%)
Sept 2021	6	1 (16.7%)	5 (83.3%)	0 (0%)
Sept 2020	5	1 (20%)	4 (80%)	0 (0%)
	3 year average	21.1%	73.7%	5.3%

Future pupil numbers based on pupil numbers at Ysgol Carno (figures as of 31.01.2023 on Teacher Centre):

Year 6: 4

Year 5: 9

Year 4: 7

Year 3: 6

Year 2: 7

Year 1: 7

Reception: 6

Total: 46 (as of 31.01.2023)

Potential financial impact on Ysgol Bro Hyddgen and Llanidloes High School under the new secondary formula agreed in cabinet on 31.01.2023:

Component 1 – Per pupil Sum of new the secondary formula (indicative 23/24 figures):

- £4,129 / learner in Key Stage 3
- £4,414 / learner in Key Stage 4

Component 3 – Unique Factors of the new secondary funding formula (indicative 23/24 figures):

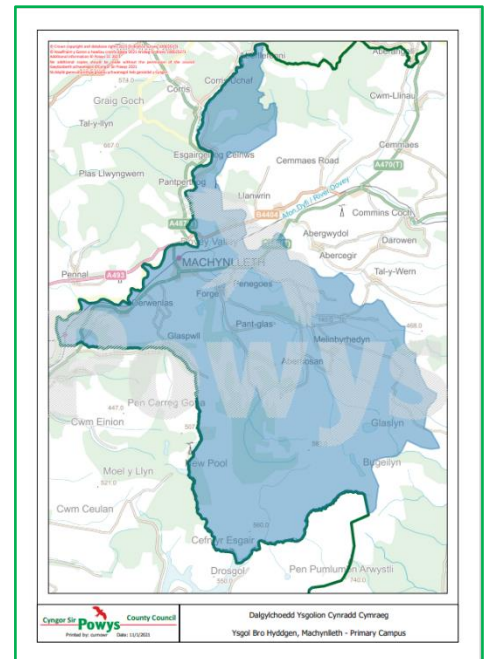
- Teaching and Learning top up (if school has less than 600 pupils or 120 in a year group).
- Small School Management and Administration top up (for secondary schools with fewer than 592 pupils).

- To **not proceed** with the minor amendments to the catchment boundaries for the primary catchment areas of Aberhosan and Melin Byrhedyn. Both hamlets to remain in the catchment area of Ysgol Bro Hyddgen.

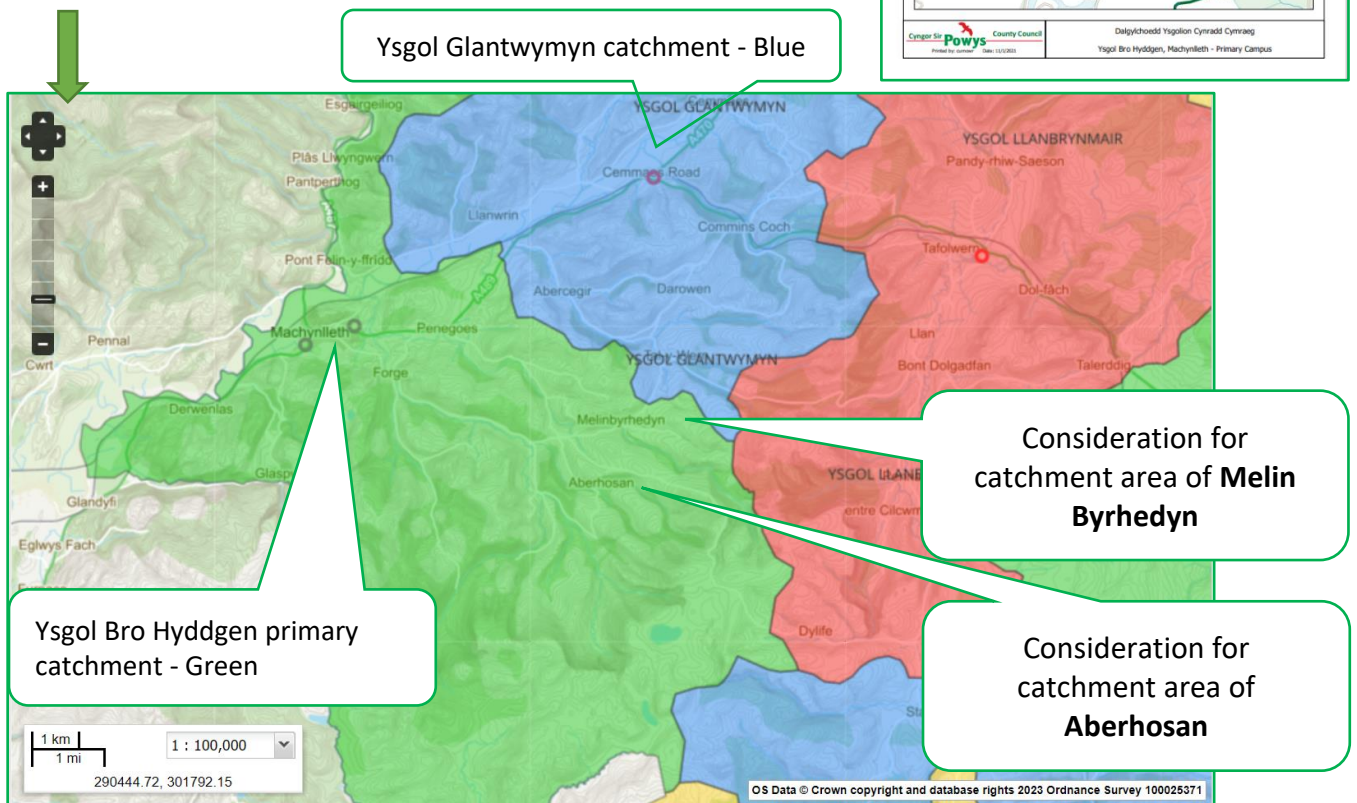
Aberhosan: Distance from the hamlet of Aberhosan to Ysgol Glantwymyn is 8.4 miles along the A489 and Ysgol Bro Hyddgen is 4.9 miles along the Forge road and A489.

Melin Byrhedyn: Distance from the hamlet of Melin Byrhedyn to Ysgol Glantwymyn is 6.9 miles along the A489 and Ysgol Bro Hyddgen is 5.0 miles along the Forge road and A489.

Original catchment map of Ysgol Bro Hyddgen based on nearest school alone: →



Consulted and proposed **final** catchment map:



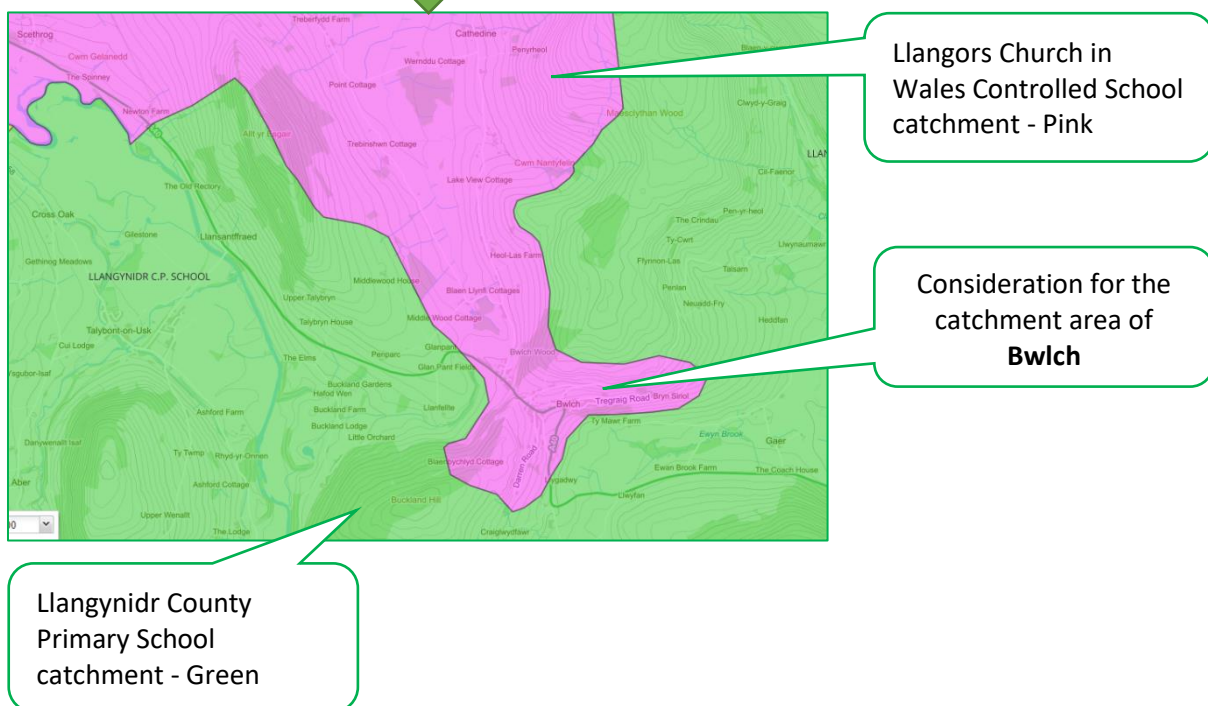
Crickhowell High School cluster:

- To **proceed** with the consulted catchment area (with additional amendments) which includes the hamlet of **Bwlch** within the catchment area of **Llangors Church in Wales Primary School** rather than Llangynidr County Primary.

Following very careful consideration of the significant comments received from the local community, Llangynidr County Primary, Llangors Church in Wales School and consideration for the local transportation routes Considerations:

- Impact of the narrow and weight restricted bridge which is not able to accommodate large vehicles such as a 53 seater coach.
- Distance from the hamlet of Bwlch to Llangors Church in Wales school is 3.9 miles along the B4560 and Llangynidr County Primary is 2.1 miles along the A40 and B4560 (many learners will fall below the 2 mile distance eligible for free home to school transport) or due to weight restriction of bridge a coach would need to travel 6.7 miles via Talybont on Usk.
- Number of current learners from Bwlch at both Llangors Church in Wales Primary School and Llangynidr County Primary School.

Consulted catchment map:



Current pupil numbers (as of 14.12.2022 taken from Teacher Centre) at both Llangynidr CP School and Llangors CiW School:

Year group	Llangynidr CP School		Llangors CiW School	
	Total no in year group	With a Bwlch address	Total no in year group	With a Bwlch address
R	16	0	11	1
1	13	1	30	5
2	19	1	19	3
3	12	1	21	3
4	16	1	20	3
5	18	0	18	1
6	18	4	19	1
Total	112	8	138	17

Impact:

Any change will not impact any current learners at the either school but will impact learners from Sept 2024 intake onwards.

The change in catchment will impact each school positively or negatively based on the following:

Component 1 – Per pupil Sum of new the primary formula (22/23 figures):

- £4,120 / learner in the Foundation Learning phase
- £3,185 / learner in Key Stage 2

Component 3 – Unique Factors of the new primary funding formula (22/23 figures):

- Both schools are eligible for the small class size top up, which provides additional funding of £1,308 for every multiple of learners below 30.

For example:

- Llangynidr CP School in recent years has attracted one learner from Bwlch with a financial impact of ~£2,812 for each foundation learner and ~£1,877 for each KS2 learner.

However:

- Llangors would potentially gain the additional learner in each year group resulting in a financial gain of at least £4,120 for each foundation learner and £3,185 for each KS2 learner.

This may then also impact the secondary transition figures, with Llangynidr learners transitioning to Crickhowell High School and Llangors learners transitioning to Gwernyfed High School. It must however be noted that not all learners will transition to respective secondary schools.

For example, under the new secondary formula agreed in cabinet on 31.01.2023:

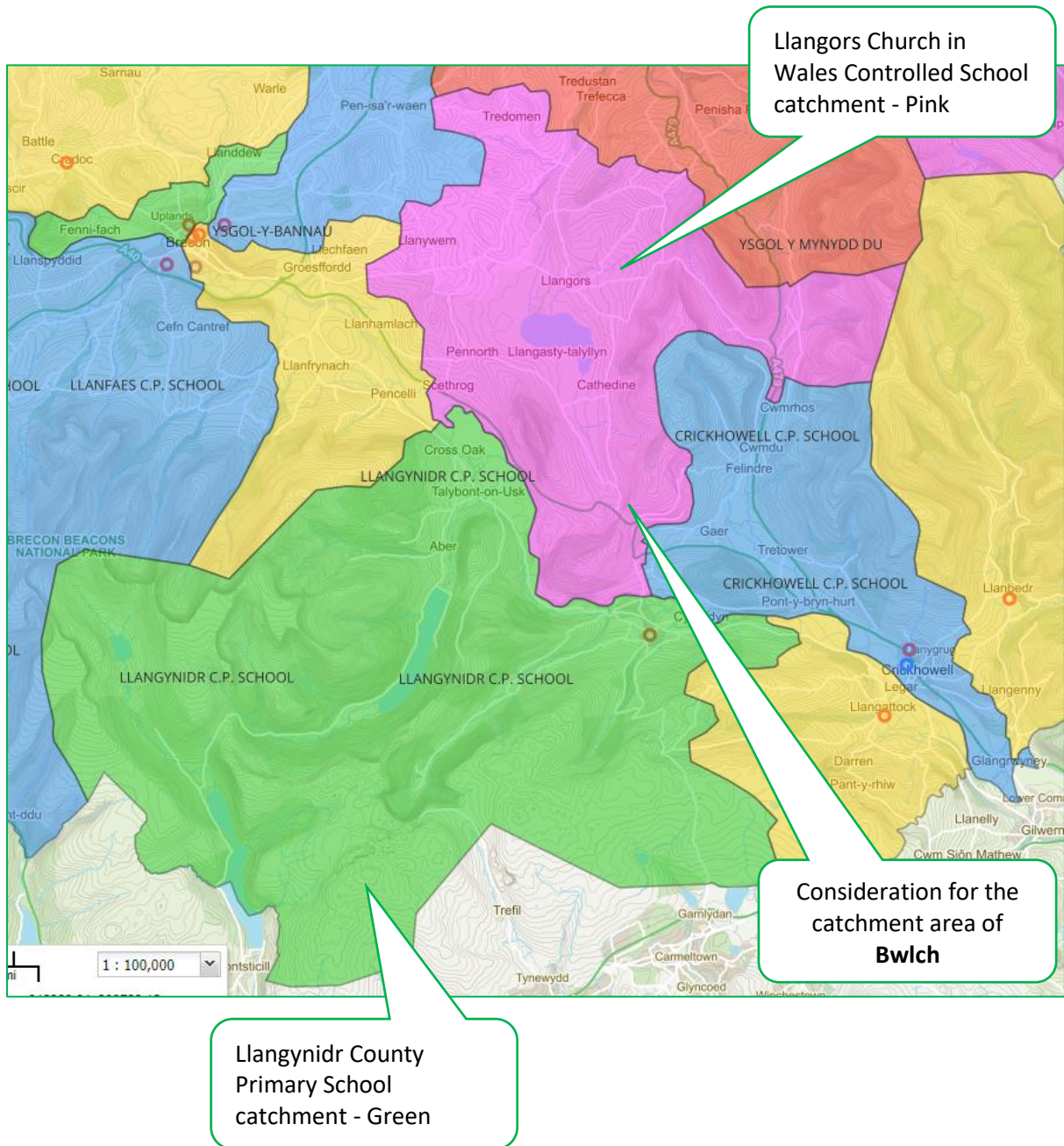
Component 1 – Per pupil Sum of new the secondary formula (indicative 23/24 figures):

- £4,129 / learner in Key Stage 3
- £4,414 / learner in Key Stage 4

Component 3 – Unique Factors of the new secondary funding formula (indicative 23/24 figures):

- Teaching and Learning top up (if school has less than 600 pupils or 120 in a year group). This would only apply to Gwernyfed High School.
- Small School Management and Administration top up (for secondary schools with fewer than 592 pupils). This would only apply to Gwernyfed High School.

Proposed final catchment area of Llangynidr County Primary and Llangors Church in Wales to include Bwlch within the catchment area of Llangors. The proposed new catchment map follows the river Usk to mitigate against the impact of the narrow and weight restricted bridge.



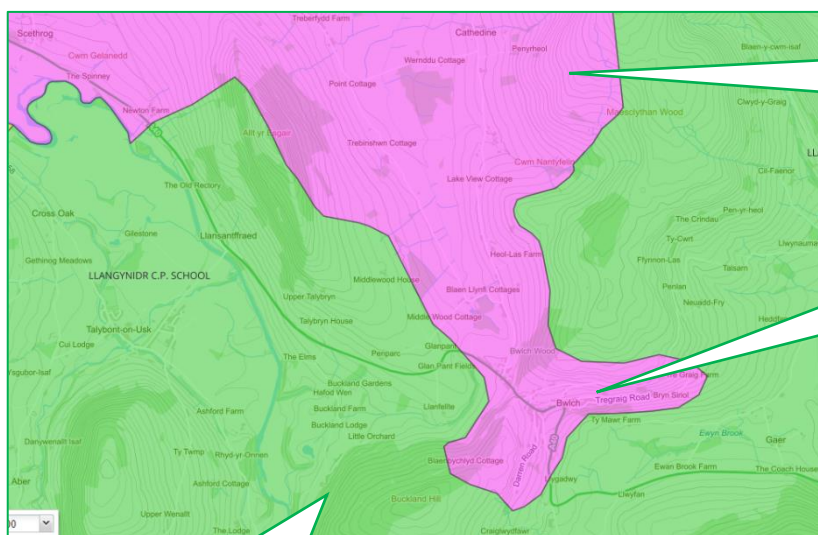
Gwernyfed High School cluster:

- To **proceed** with the consulted catchment area (with additional amendments) which includes the hamlet of **Bwlch** within the catchment area of **Llangors Church in Wales Primary School** rather than **Llangynidr County Primary**.

Following very careful consideration of the significant comments received from the local community, Llangynidr County Primary, Llangors Church in Wales School and consideration for the local transportation routes Considerations:

- Impact of the narrow and weight restricted bridge which is not able to accommodate large vehicles such as a school 53 seater coach.
- Distance from the hamlet of Bwlch to Llangors Church in Wales school is 3.9 miles along the B4560 and Llangynidr County Primary is 2.1 miles along the A40 and B4560 (many learners will fall below the 2 mile distance eligible for free home to school transport) or due to weight restriction of bridge a coach would need to travel 6.7 miles via Talybont on Usk.
- Number of current learners from Bwlch at both Llangors Church in Wales Primary School and Llangynidr County Primary School.

Consulted catchment map:



Llangors Church in
Wales Controlled School
catchment - Pink

Consideration for the
catchment area of
Bwlch

Llangynidr County
Primary School
catchment - Green

Current pupil numbers (as of 14.12.2022 taken from Teacher Centre) at both Llangynidr CP School and Llangors CiW School:

Year group	Llangynidr CP School		Llangors CiW School	
	Total no in year group	With a Bwlch address	Total no in year group	With a Bwlch address
R	16	0	11	1
1	13	1	30	5
2	19	1	19	3
3	12	1	21	3
4	16	1	20	3
5	18	0	18	1
6	18	4	19	1
Total	112	8	138	17

Impact:

Any change will not impact any current learners at the either school but will impact learners from Sept 2024 intake onwards.

The change in catchment will impact each school positively or negatively based on the following:

Component 1 – Per pupil Sum of new the primary formula (22/23 figures):

- £4,120 / learner in the Foundation Learning phase
- £3,185 / learner in Key Stage 2

Component 3 – Unique Factors of the new primary funding formula (22/23 figures):

- Both schools are eligible for the small class size top up, which provides additional funding of £1,308 for every multiple of learners below 30.

For example:

- Llangynidr CP School in recent years has attracted one learner from Bwlch with a financial impact of ~£2,812 for each foundation learner and ~£1,877 for each KS2 learner.

However:

- Llangors would potentially gain the additional learner in each year group resulting in a financial gain of at least £4,120 for each foundation learner and £3,185 for each KS2 learner.

This may then also impact the secondary transition figures, with Llangynidr learners transitioning to Crickhowell High School and Llangors learners transitioning to Gwernyfed High School. It must however be noted that not all learners will transition to respective secondary schools.

For example, under the new secondary formula agreed in cabinet on 31.01.2023:

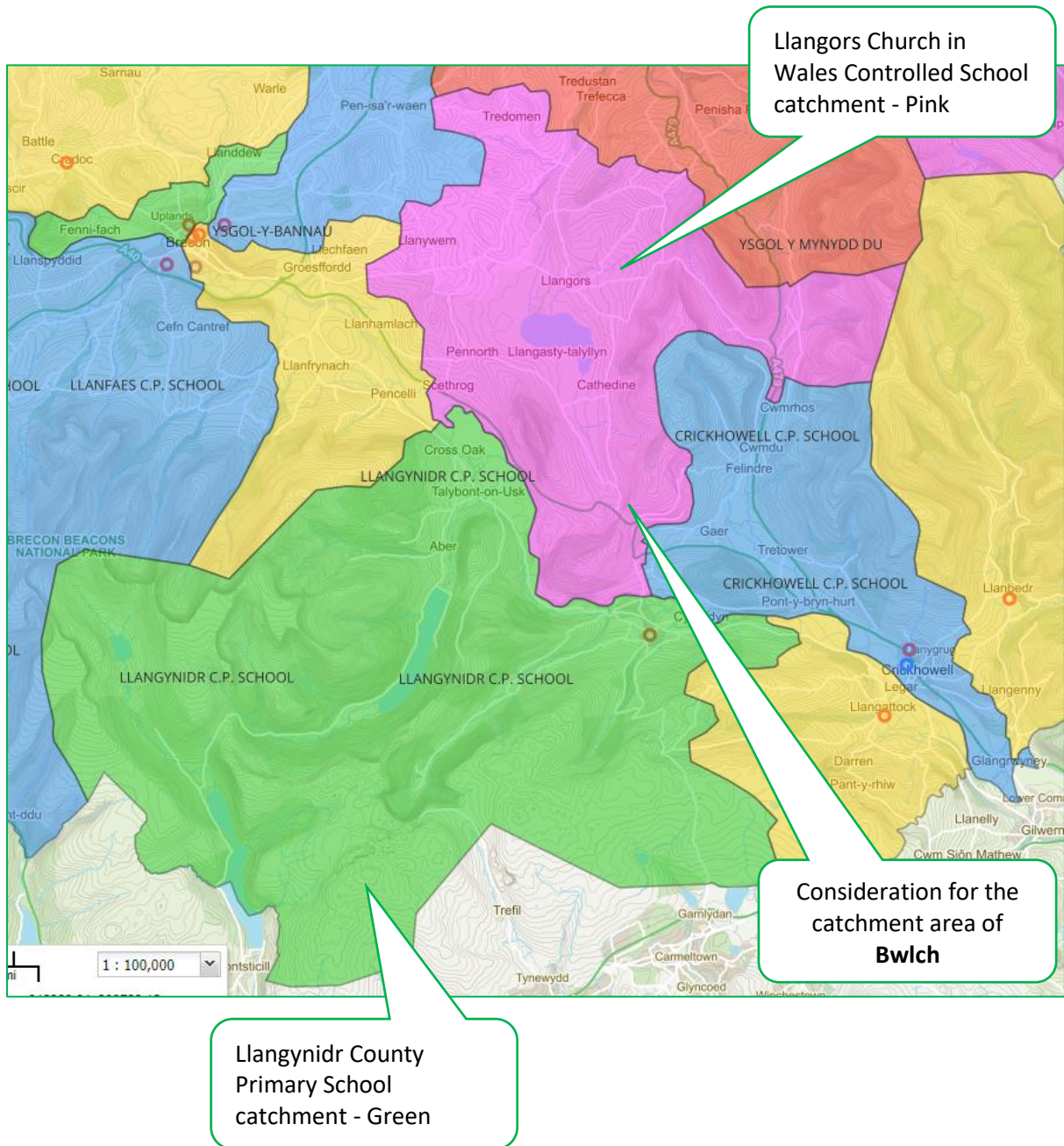
Component 1 – Per pupil Sum of new the secondary formula (indicative 23/24 figures):

- £4,129 / learner in Key Stage 3
- £4,414 / learner in Key Stage 4

Component 3 – Unique Factors of the new secondary funding formula (indicative 23/24 figures):

- Teaching and Learning top up (if school has less than 600 pupils or 120 in a year group). This would only apply to Gwernyfed High School.
- Small School Management and Administration top up (for secondary schools with fewer than 592 pupils). This would only apply to Gwernyfed High School.

Proposed final catchment area of Llangynidr County Primary and Llangors Church in Wales to include Bwlch within the catchment area of Llangors. The proposed new catchment map follows the river Usk to mitigate against the impact of the narrow and weight restricted bridge.

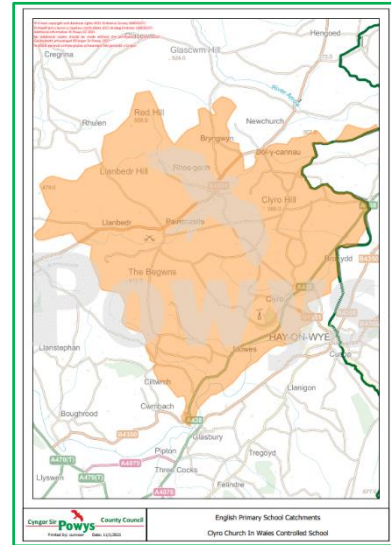


- To **not proceed** with the minor amendment to the catchment boundary for the primary catchment areas of Llanerchir. Llanerchir to remain in the catchment area of **Clyro Church in Wales School**.

Original catchment map of Clyro CiW School



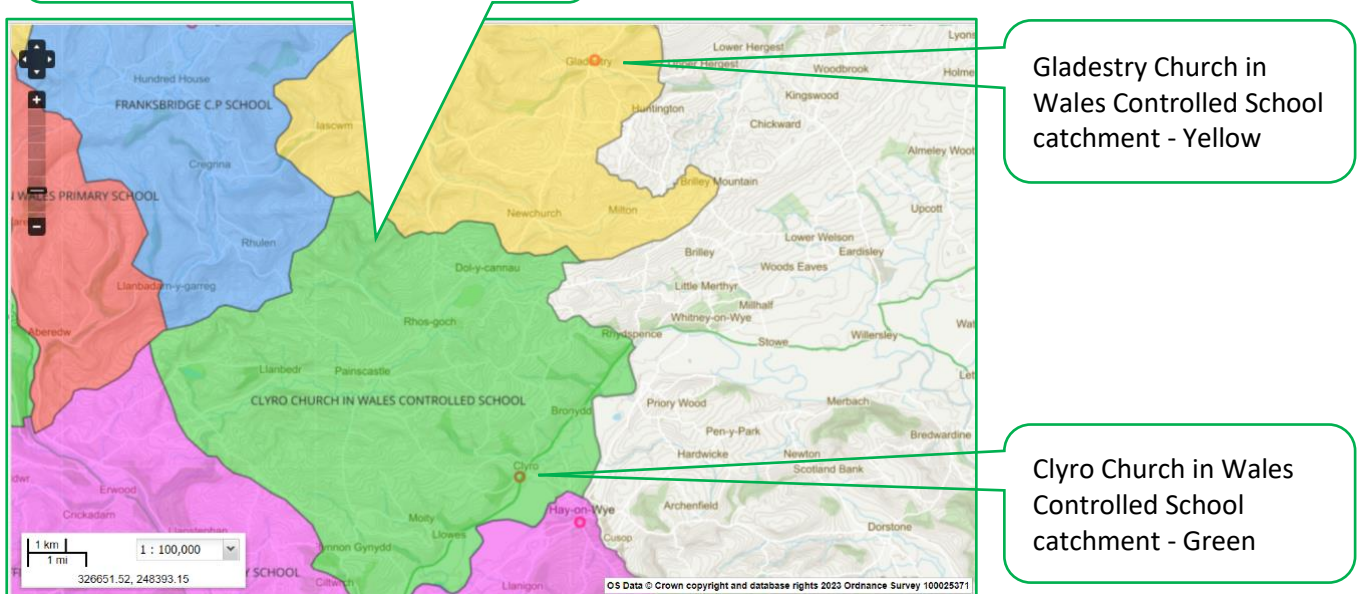
based on nearest school alone:



Consulted and proposed **final** catchment map:



Consideration for catchment area of **Llanerchir**

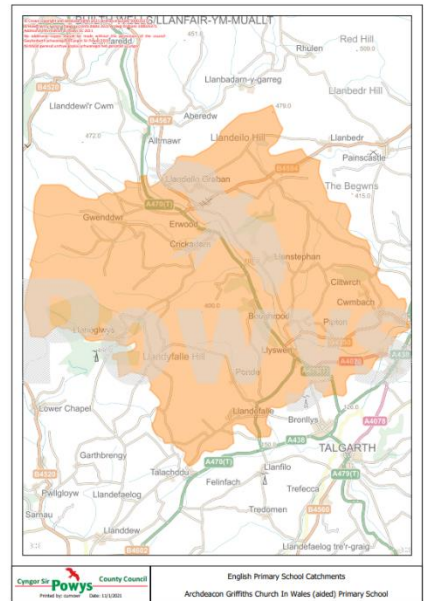


Gladestry Church in Wales Controlled School catchment - Yellow

Clyro Church in Wales Controlled School catchment - Green

- To **not proceed** with the minor amendment to the catchment boundary for the primary catchment areas of Llanstephan. Llanstephan to remain in the catchment area of **Archdeacon Griffiths Church in Wales school**. Distance from the hamlet of Llanstephan to Archdeacon CiW school is 3.5 miles along the A470 and distance to Clyro CiW School is 11.4 miles along the A438.

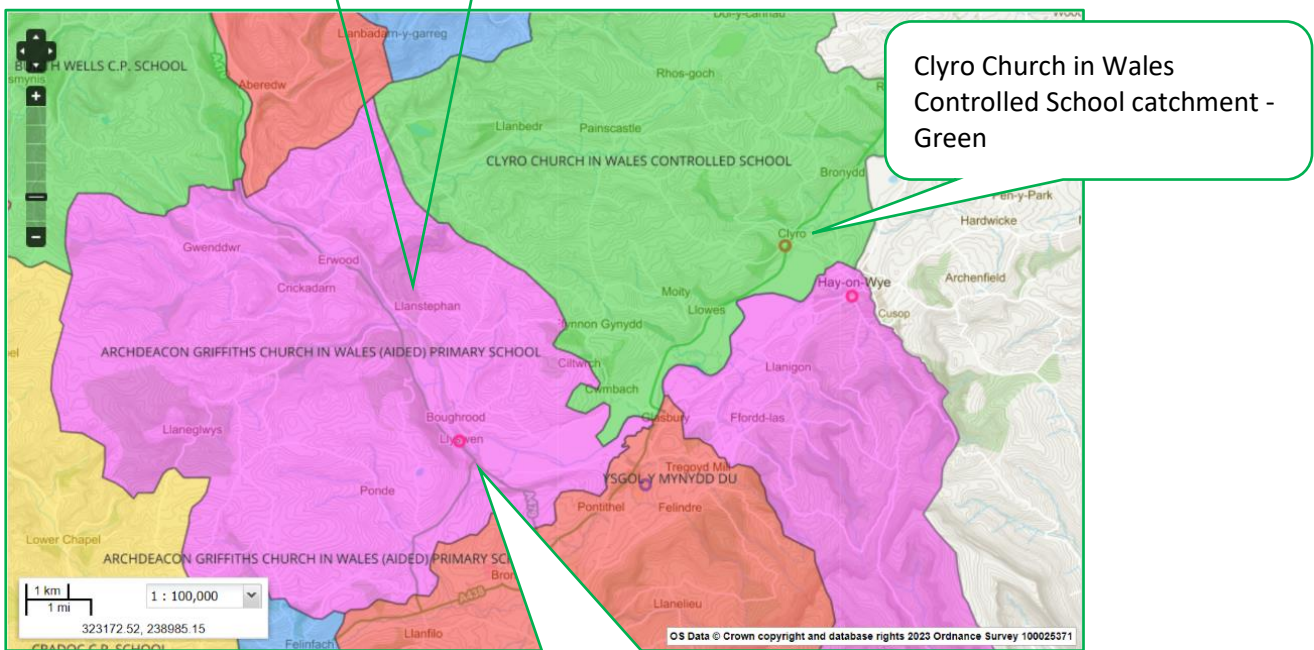
Original catchment map of Archdeacon CiW School based on nearest school alone:



Consulted and proposed **final** catchment map:



Consideration for catchment area of **Llanstephan**



Clyro Church in Wales Controlled School catchment - Green

Archdeacon Griffiths Church in Wales (Aided) primary school catchment - Pink

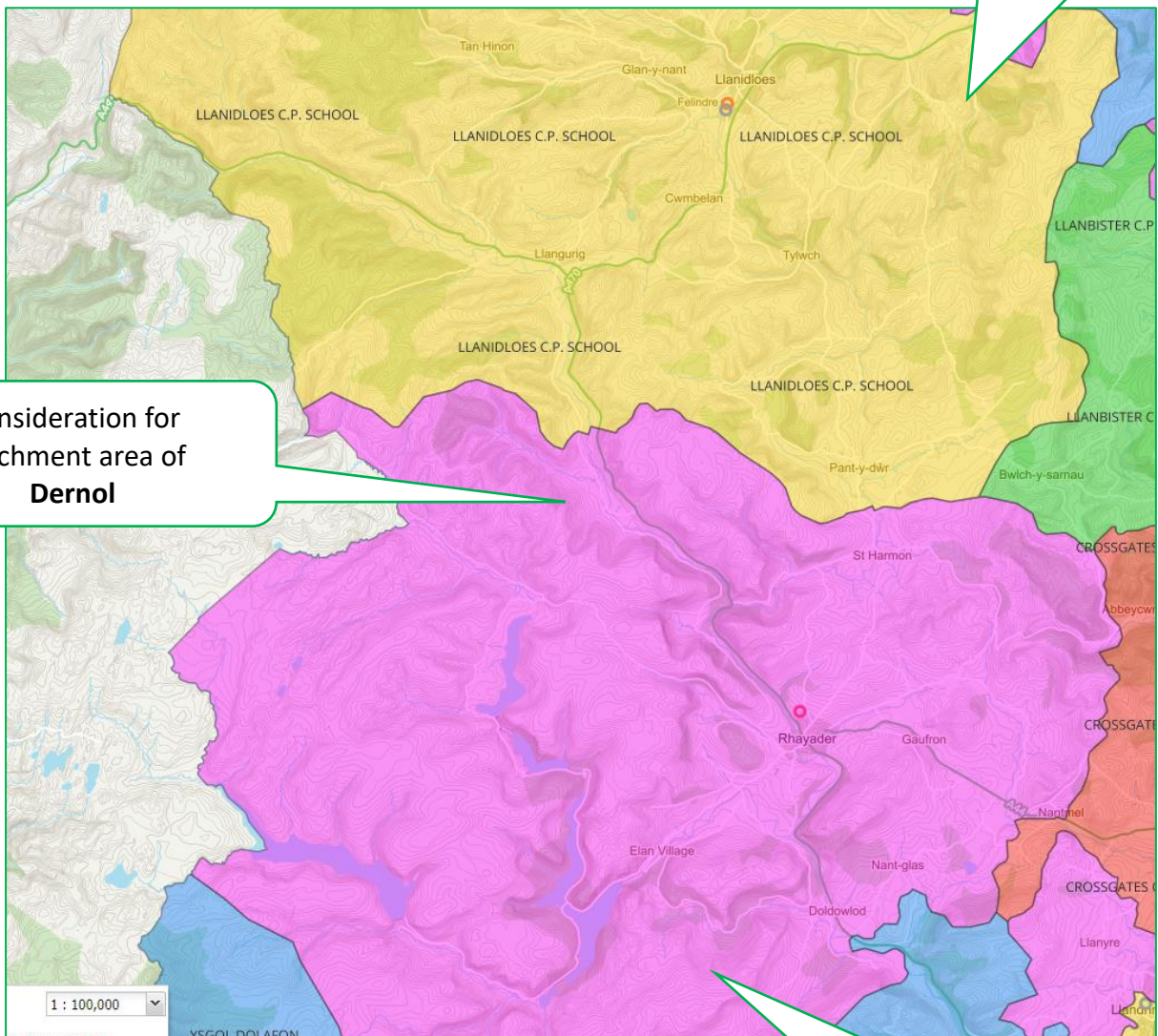
Llanidloes High School cluster:

- To **not proceed** with the minor amendment to the catchment boundary for the primary catchment area of Dernol. Dernol to remain in the catchment area of **Rhayader Church in Wales school**. Distance from the hamlet of Dernol to Rhayader CiW school is 7.3 miles along the A470 and distance to Llanidloes CP School is 9.6 miles along the A470.

Consulted and proposed **final** catchment map:



Llanidloes County Primary school catchment - Yellow

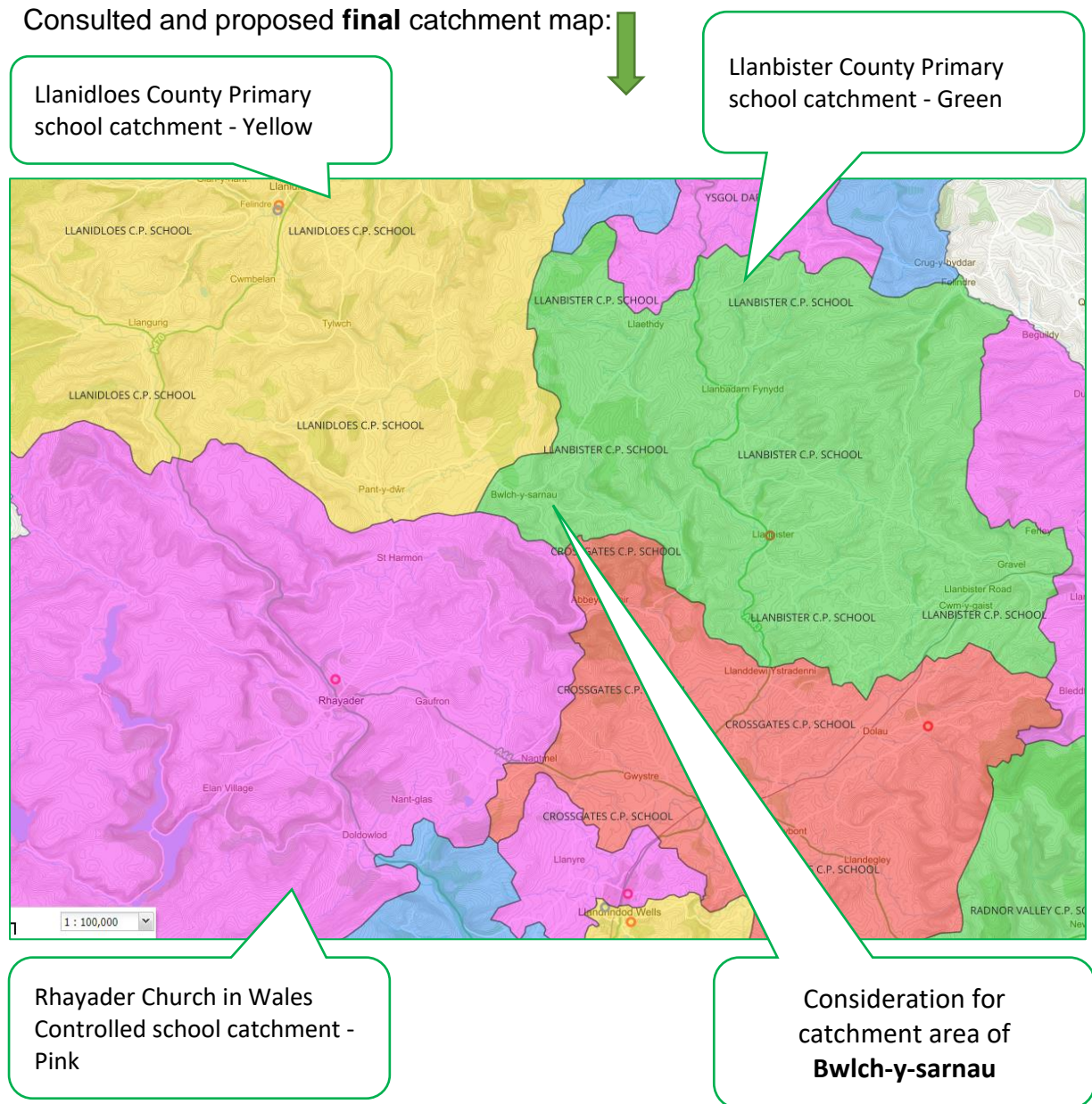


Consideration for catchment area of **Dernol**

Rhayader Church in Wales Controlled school catchment - Pink

- To **not proceed** with the minor amendment to the catchment boundary for the primary catchment area of Bwlch y Sarnau. Bwlch y Sarnau to remain in the catchment area of **Llanbister CP school**. Distance from the hamlet of Bwlch y Sarnau to Rhayader CiW school is 8.0 miles along the B4518, Llanidloes CP School is 10.3 miles along the B4518 and Llanbister CP School is 6.1 miles along the A483 (however, this is recognised to be mainly along narrow single roads with only a short distance on the A483).

Consulted and proposed **final** catchment map:



- **Maintain Ysgol Gynradd Carno** solely within the catchment area of Ysgol Bro Hyddgen for Secondary provision. This decision is based on Ysgol Gynradd Carno being a Welsh medium primary school as part of the Federation of schools with Ysgol Glantwymyn and Ysgol Llanbrynmair and strong transition links with Ysgol Bro Hyddgen.

However, the distance of Carno village from Llanidloes High School (via Caersws) is 14.8 miles compared to Bro Hyddgen at 17.2 miles.

Of the small number of pupils attending Ysgol Gynradd Carno, strengthening transition to Ysgol Bro Hyddgen will impact positively on pupil numbers, however the impact on Llanidloes High School will be negative and will not reflect the strength of feeling within the local community and past trends.

	No of pupils at Ysgol Gynradd Carno (PLASC figures)	Destination Secondary School		
		Ysgol Bro Hyddgen	Llanidloes High School	Other schools (outside of Powys)
Sept 2022	8	2 (25%)	5 (62.5%)	1 (20%)
Sept 2021	6	1 (16.7%)	5 (83.3%)	0 (0%)
Sept 2020	5	1 (20%)	4 (80%)	0 (0%)
	3 year average	21.1%	73.7%	5.3%

Future pupil numbers based on pupil numbers at Ysgol Carno (figures as of 31.01.2023 on Teacher Centre):

Year 6: 4

Year 5: 9

Year 4: 7

Year 3: 6

Year 2: 7

Year 1: 7

Reception: 6

Total: 46 (as of 31.01.2023)

Potential financial impact on Ysgol Bro Hyddgen and Llanidloes High School under the new secondary formula agreed in cabinet on 31.01.2023:

Component 1 – Per pupil Sum of new the secondary formula (indicative 23/24 figures):

- £4,129 / learner in Key Stage 3
- £4,414 / learner in Key Stage 4

Component 3 – Unique Factors of the new secondary funding formula (indicative 23/24 figures):

- Teaching and Learning top up (if school has less than 600 pupils or 120 in a year group).
- Small School Management and Administration top up (for secondary schools with fewer than 592 pupils).

- Further review to consider if **Ysgol Dafydd Llwyd** should remain as a feeder school for Ysgol Bro Caereinion and / or Llanidloes High School. In doing so, careful consideration should be given to:
 - Impact of strength of transition to only one cluster school, rather than dilution to two secondary schools
 - Impact on continuity of language provision and the breadth and quality of the Welsh language offer
 - Impact on capacity number of both schools and impact on neighbouring schools as per the guidance outlined below.

The “Measuring the capacity of schools in Wales” guidance states:

1.12 The admission number is the number of pupils who should be admitted to a relevant age group if sufficient applications for places are received. Pupils may not be refused a place until the admission number is reached. The number is calculated by dividing the capacity by the number of year groups to be accommodated at the school. As the admission number reflects the school’s ability to accommodate pupils it should only be exceeded in exceptional circumstances. Once an admission number has been set by the admission authority, an admission authority should not admit children above the published number unless the school governing body and the local authority agree that admitting above that number will not adversely affect the school in the longer term and will not have a detrimental effect on neighbouring schools. If it is necessary to breach the admission number for more than two years the local authority, in consultation with the Diocesan Authority where appropriate, should review the provision of school places in that area.

1.13 Governing body admission authorities should be particularly mindful that admitting more pupils than the school has capacity for, could prejudice the efficiency of education for pupils and could have the effect of drawing pupils from other schools that may then find it more challenging to retain sufficient teachers to facilitate the delivery of a broad and balanced curriculum.

The School Admissions Code states:

3.6 The admission number reflects the school's ability to accommodate pupils and it should not be exceeded. However, it may be reasonable for the admission authority to consider exercising discretion, in exceptional circumstances, to admit more pupils than the admission number indicates. Such instances might include:

- Where there are a significant number of surplus places across the year groups in the school, so that the pupil can be accommodated without prejudicing future intakes if the increased uptake of places continues.
- If there is a temporary shortage of a particular type of provision in an area, for example Welsh medium education, while additional provision is being established.

3.7 It would not be appropriate to exceed the admission number of a school as described above where there are places available at a suitable alternative school

which is within a reasonable travelling distance of a child's home having had regard to the local authority's school travel policy.

The following table outlines the secondary school destination of Ysgol Dafydd Llwyd learners in the last three years. Due to the significant impact on both Ysgol Bro Caereinion and Llanidloes High School the case for a formal review is strong.

	No of pupils at Ysgol Dafydd Llwyd (PLASC figures)	Destination Secondary School				
		Caereinion / Bro Caereinion	Llanidloes High School	Welshpool High School	Newtown High School	Other schools (outside of Powys)
Sept 2022	17	7 (41.2%)	5 (29.4%)	1 (5.9%)	1 (5.9%)	3 (17.6%)
Sept 2021	17	5 (29.4%)	9 (52.9%)	0 (0%)	2 (11.8%)	1 (5.9%)
Sept 2020	23	9 (39.1%)	11 (47.8%)	1 (4.3%)	1 (4.3%)	1 (4.3%)
	3 year average	36.84%	43.9%	3.51%	7.0%	8.8%

Impact: Future pupil numbers based on pupil numbers at Ysgol Dafydd Llwyd (figures as of 31.01.2023 on Teacher Centre) indicates an increasing role at Ysgol Dafydd Llwyd and therefore significant impact for Ysgol Bro Caereinion and / or Llanidloes High School.

Year 6: 17
 Year 5: 16
 Year 4: 25
 Year 3: 24
 Year 2: 38
 Year 1: 31
 Reception: 32

Total: 183 (as of 31.01.2023)

Potential financial impact on Ysgol Bro Caereinion and Llanidloes High School under the new secondary formula agreed in cabinet on 31.01.2023:

Component 1 – Per pupil Sum of new the secondary formula (indicative 23/24 figures):

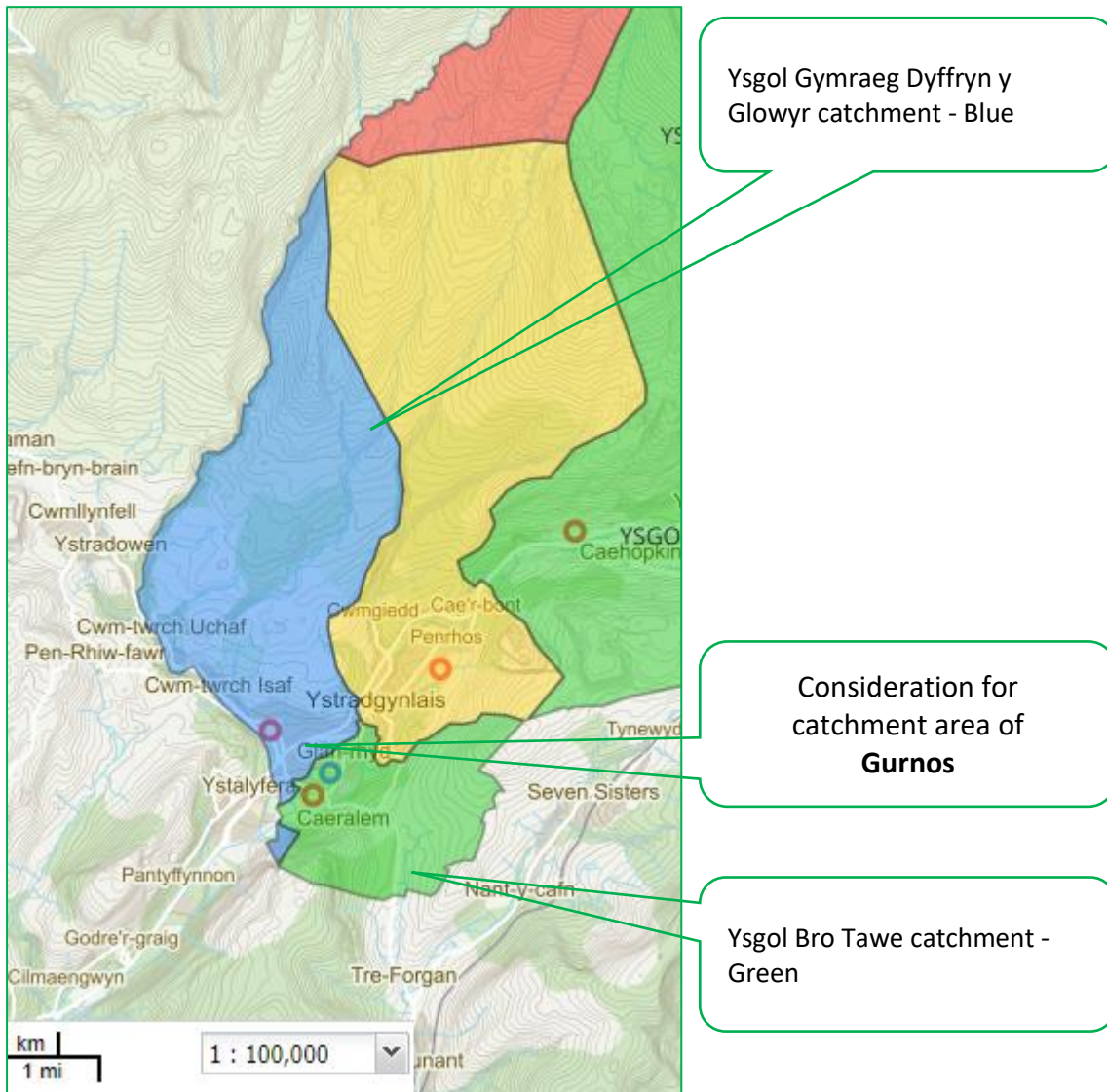
- £4,129 / learner in Key Stage 3
- £4,414 / learner in Key Stage 4

Component 3 – Unique Factors of the new secondary funding formula (indicative 23/24 figures):

- Teaching and Learning top up (if school has less than 600 pupils or 120 in a year group).
- Small School Management and Administration top up (for secondary schools with fewer than 592 pupils).

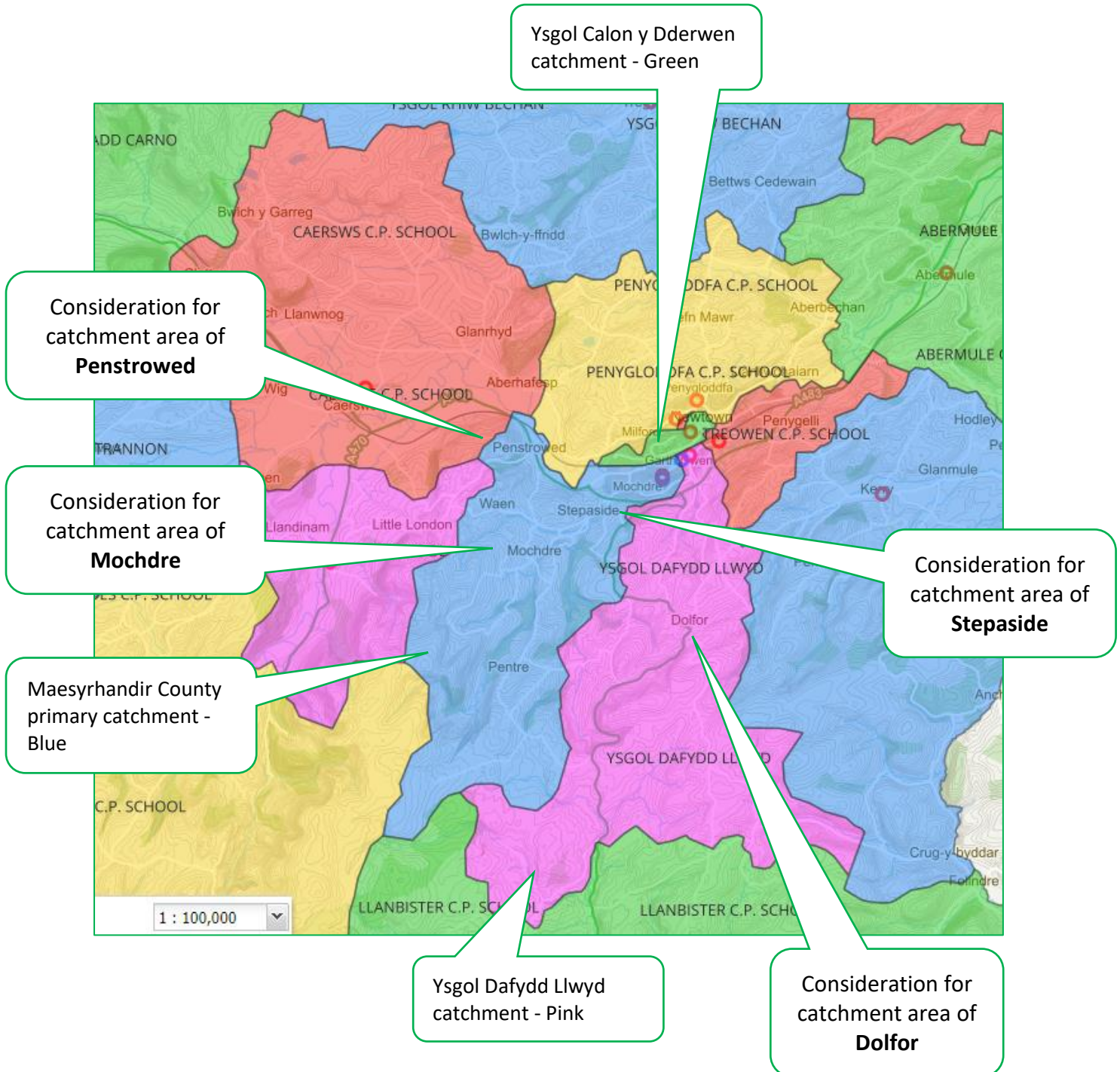
Ysgol Maesydderwen cluster:

- To **not proceed** with the minor amendments to the catchment boundaries for the primary catchment areas of Gurnos and Cwm Twrch. This is because Gurnos learners would need to cross the main road.



Newtown High School – Newtown Campus cluster:

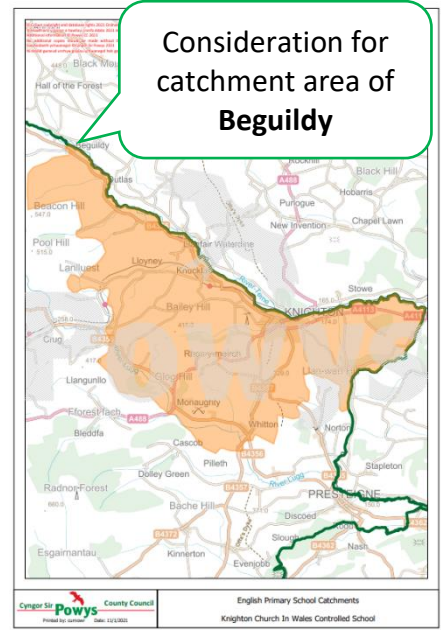
- To **not proceed** with the minor amendments to the catchment boundaries for the primary catchment areas of Mochdre, Penstrowed, Stepaside and Dolfor.



Newtown High School – John Beddoes cluster:

- To **proceed** with the minor amendment to the catchment boundary for the primary catchment area of **Beguildy**. Beguildy to move into the catchment area of **Knighthon Church in Wales school** rather than Llanbister CP school. Distance from the hamlet of Beguildy to Knighthon is 8 miles along the B4355 and Llanbister is 9.6 miles via the B4356.

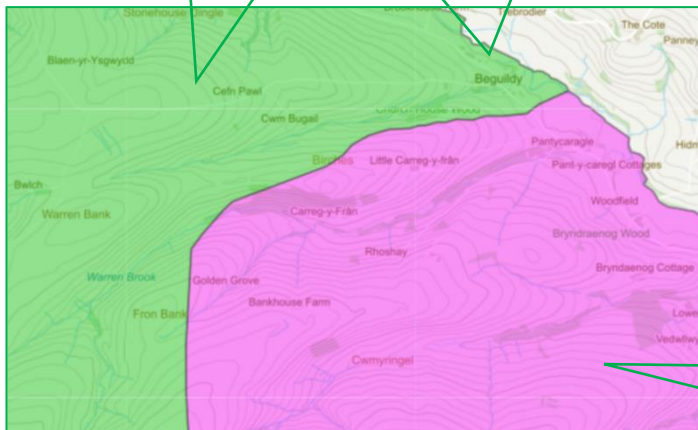
Catchment map based on nearest school only: →



↓ Consulted catchment map:

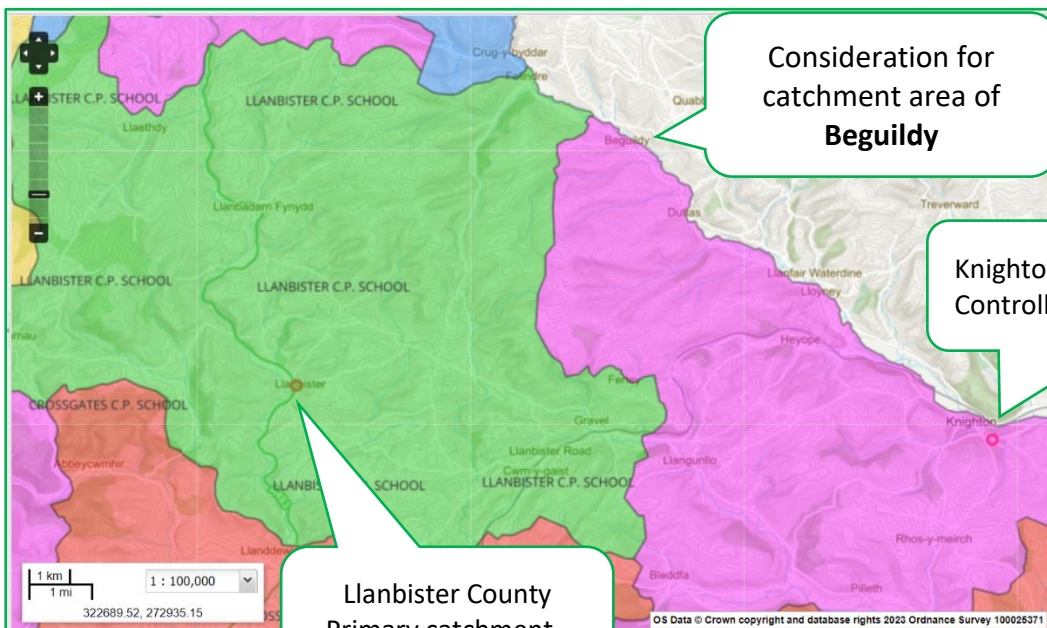
Llanbister County Primary catchment - Green

Consideration for catchment area of **Beguildy**



Knighthon Church in Wales Controlled School - Pink

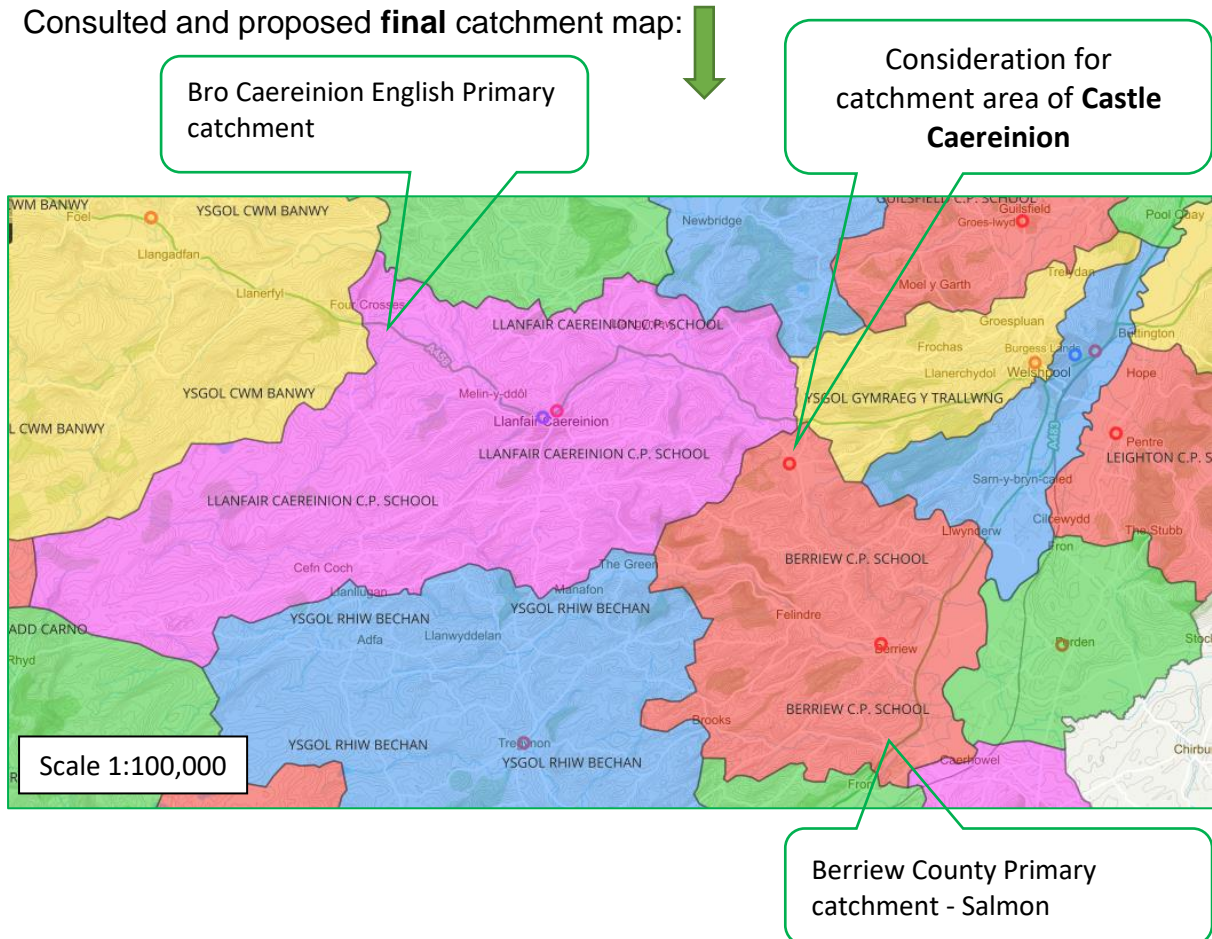
Proposed and amended final catchment map based on consultation responses:



Welshpool High School cluster:

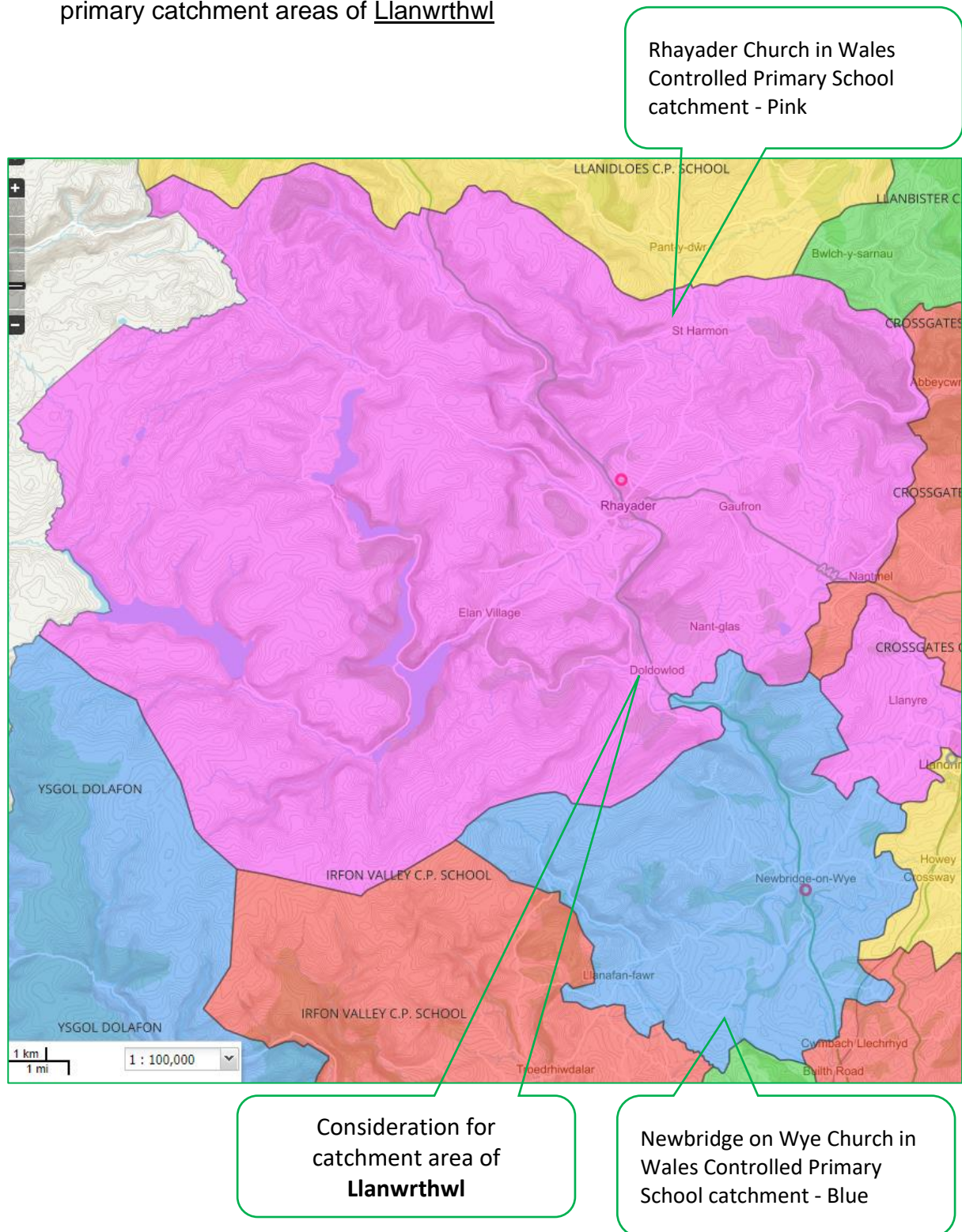
- To **not proceed** with the minor amendments to the catchment boundaries for the primary catchment areas of Castle Caereinion. Castle Caereinion to **remain** in the English medium catchment area of Berriew CP school. Distance from the village of Castle Caereinion to Berriew CP school is 3.7 miles and Ysgol Bro Caereinion is 4.8 miles along the narrow B4385 or 5.5 miles along the A458.

Consulted and proposed **final** catchment map:



Ysgol Calon Cymru – Builth campus cluster:

- To **not proceed** with the minor amendments to the catchment boundaries for the primary catchment areas of Llanwrthwl



Ysgol Calon Cymru – Llandrindod campus cluster:

No comments were received in respect of the proposed catchment maps for the Ysgol Calon Cymru, Llandrindod Wells campus catchment.

Ysgol Llanfyllin cluster:

- Addition of **Meifod County Primary School** as a feeder school for Ysgol Llanfyllin rather than Ysgol Bro Caereinion to reflect request by Meifod Governing Body to change clusters.

As a result, learners from Meifod CP School will transition to Ysgol Llanfyllin.

This will impact on pupil numbers for Ysgol Bro Caereinion and Ysgol Llanfyllin. However, as the numbers below reflect, at least half of the learners and their families have chosen in recent years to transition to Ysgol Llanfyllin rather than Ysgol Bro Caereinion.

	No of pupils at Meifod CP School	Destination Secondary School		
		Caereinion / Bro Caereinion	Ysgol Llanfyllin	Other schools (outside of Powys)
Sept 2022	10	3 (30%)	5 (50%)	2 (20%)
Sept 2021	14	5 (35.7%)	8 (57.1%)	1 (7.1%)
Sept 2020	4	1 (25%)	3 (75%)	0 (0%)
	3 year average	32.1%	57.1%	10.7%

Future pupil numbers based on pupil numbers at Meifod CP School (figures as of 05.01.2023 on Teacher Centre):

Year 6: 7

Year 5: 8

Year 4: 14

Year 3: 10

Year 2: 9

Year 1: 8

Reception: 8

Total: 64 (as of 05.01.2023)

Potential financial impact on Ysgol Bro Caereinion and Ysgol Llanfyllin: Under the new secondary formula agreed in cabinet on 31.01.2023:

Component 1 – Per pupil Sum of new the secondary formula (indicative 23/24 figures):

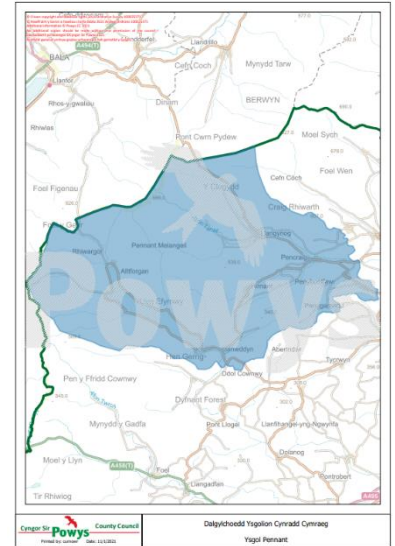
- £4,129 / learner in Key Stage 3
- £4,414 / learner in Key Stage 4

Component 3 – Unique Factors of the new secondary funding formula (indicative 23/24 figures):

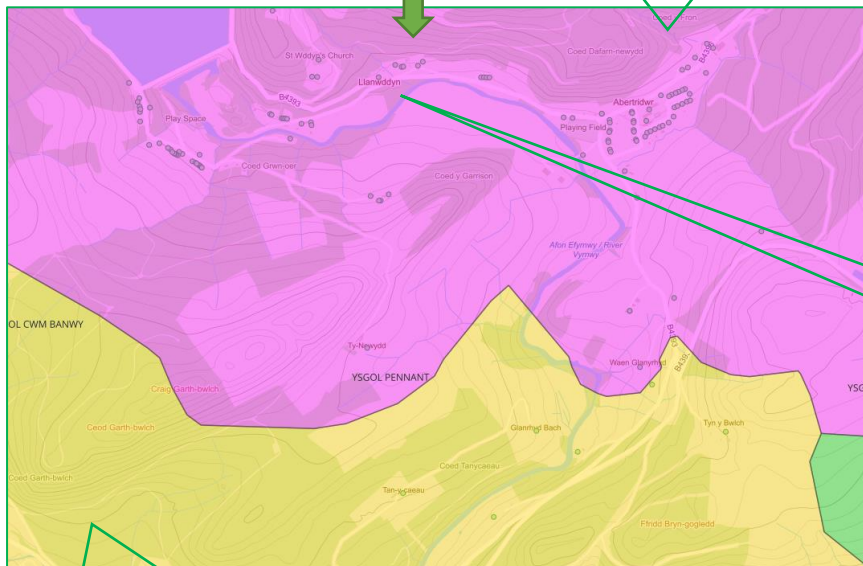
- Teaching and Learning top up (if school has less than 600 pupils or 120 in a year group).
- Small School Management and Administration top up (for secondary schools with fewer than 592 pupils).

- To **proceed** with the minor amendments to the catchment boundary for the primary catchment area of Llanwddyn. Llanwddyn to **remain** in the catchment area of **Ysgol Pennant**. Distance from the village of Llanwddyn to Ysgol Pennant is 7.1 miles along the B4396, Ysgol Llanfyllin is 9.7 miles along the B4393, Ysgol Pontrobert is 9.6 miles along the B4393 and Ysgol Cwm Banwy is 8.6 miles along the B4395.

Original catchment map of Ysgol Pennant based on nearest school alone:



Consulted catchment map:

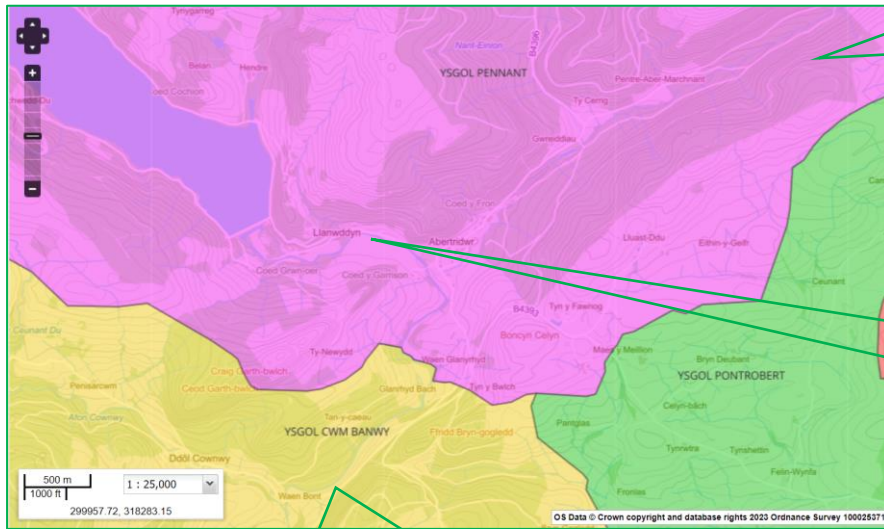


Ysgol Pennant catchment - Pink

Consideration for catchment area boundary in region of **Llanwddyn**

Ysgol Cwm Banwy catchment - Yellow

Proposed new and final catchment boundary following consultation:

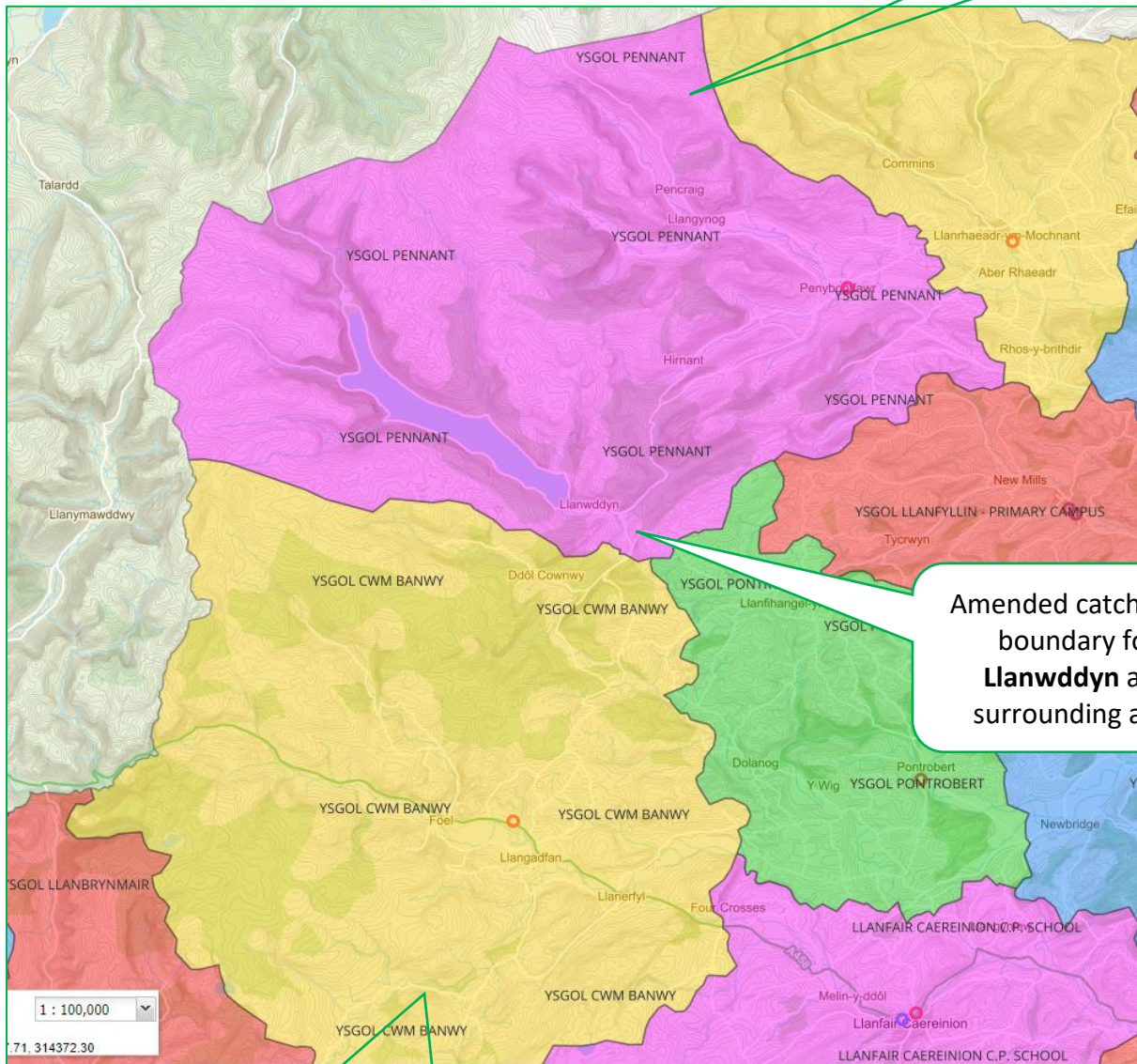


Ysgol Pennant catchment - Pink

Amended catchment boundary for Llanwddyn and surrounding area

Ysgol Cwm Banwy catchment - Yellow

Ysgol Pennant catchment - Pink




Amended catchment boundary for Llanwddyn and surrounding area

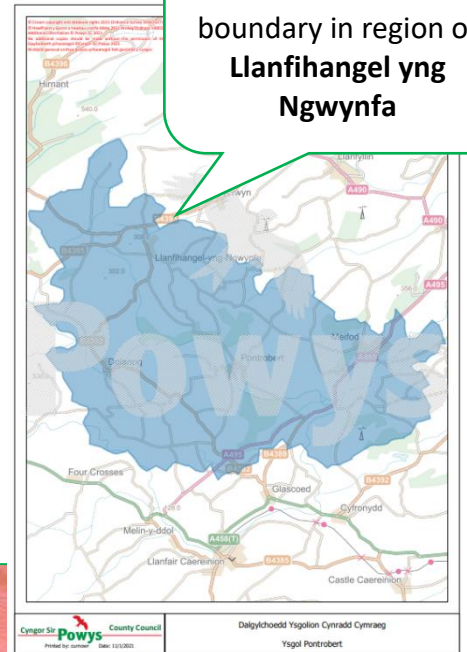
Ysgol Cwm Banwy catchment - Yellow

- To **not proceed** with the minor amendments to the catchment boundary for the primary catchment area of Llanfihangel yng Ngwynfa. Llanfihangel yng Ngwynfa to **remain** in the catchment area of **Ysgol Pontrobert**.

Distance from the hamlet of Llanfihangel yng Ngwynfa to Ysgol Pennant is 10.3 miles along the B4393 and B4391, Ysgol Cwm Banwy is 8.1 miles along the B4395 and Ysgol Pontrobert is **4.3 miles** along the B4382.

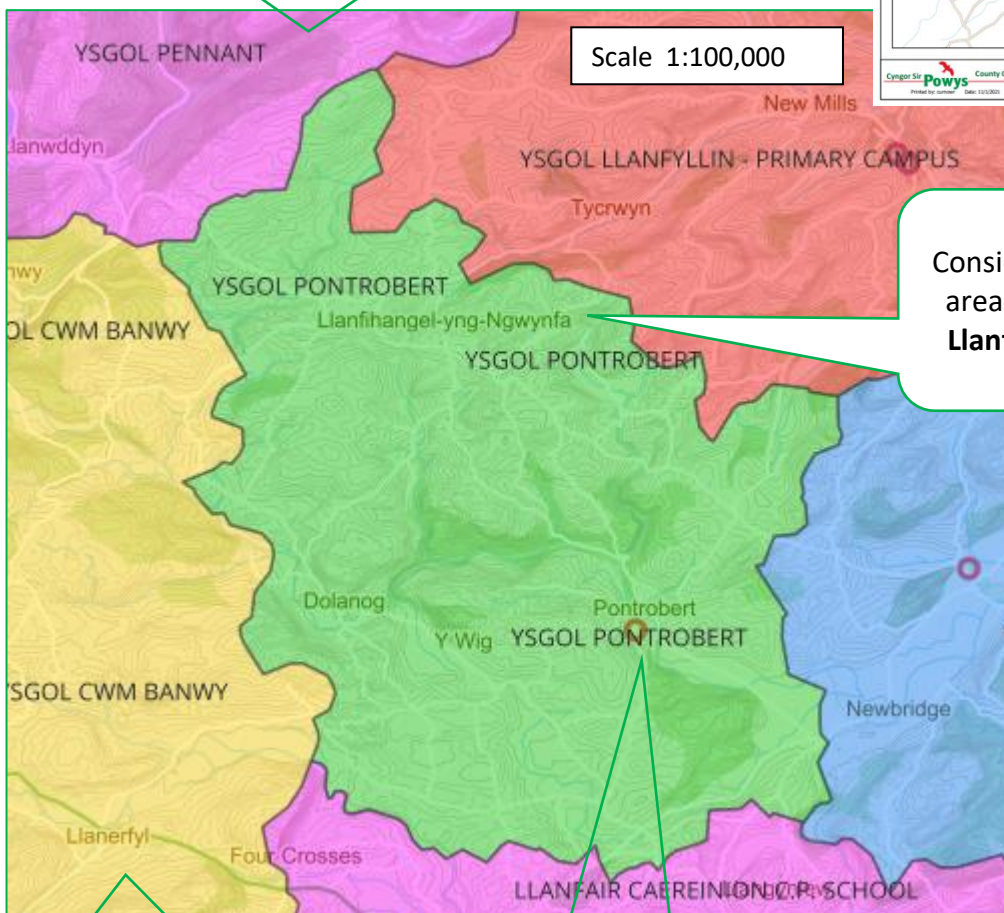
Original catchment map of Ysgol Pontrobert

based on nearest school alone: 



Consulted and proposed **final** catchment map:

Ysgol Pennant catchment - Pink



Ysgol Cwm Banwy catchment - Yellow

Ysgol Pontrobert catchment - Green